



KAGOSHIMA UNIVERSITY

Outline 2016-2017



Contents

Message from the President	1
Facts and Figures	2
Organization	4
Kagoshima University Fundamental Values.....	5
Courses Offered by Kagoshima University.....	6
Undergraduate Faculties	8
Graduate Schools	10
Institutes for Education and Research / Joint - Use Facilities.....	12
Strategic Study Fields	14
Number of International Students.....	15
Overseas Partner Institutions / Overseas Offices.....	16
Facilities	18
Campus Guide	20

Official Mascot Character
“SATTSUN”



The mascot character was selected by the students through voting. The design was inspired by the hope that the students will be as active as the volcano of Sakurajima and will develop their talents like the great men of Satsuma did in the past.

MESSAGE FROM THE PRESIDENT

Kagoshima University has a long history and rich tradition in education. The university's origins can be traced back to the Hangaku Zoshikan School, which was established in 1773 and was run by the feudal domain. After the merger of several higher education institutions, including the Seventh Higher School established during the Meiji period (1868-1912), Kagoshima University inherited this educational tradition and was newly established in 1949 as a national university. Since then, Kagoshima University has been committed to comprehensively empower its students to positively contribute towards the future of our community and global society.

Kagoshima has a storied history of leaders who promoted the transformation and modernization of this country. In the spirit of these forefathers, this university is embodied by the core values of societal development, academic diversity, and the essence of self-sufficiency & enterprise. Through our educational programs, we aim to instill these same values within our students, and guide them in their growth as productive members of our local and global community. In addition to the advanced skills and knowledge necessary for success in contemporary society, students will gain compassion and understanding for those around them in their daily life.

Over the years, Kagoshima University has developed into one of the leading comprehensive universities in Japan, comprised of nine faculties and ten graduate schools, with approximately 9000 undergraduates and 1500 graduate students. In our continued pursuit of individual spirit of enterprise, this university has developed and supported a number of programs such as financial support for overseas educational programs, volunteer opportunities, projects addressing social challenges, a scholarship system and student awards program.

Kagoshima University has partnerships with 135 institutions in 32 countries and regions, and has approximately 300 international students. We also encourage developing and supporting international students by providing dormitories (available to both foreign and Japanese students), assistance for living in Japan and studying at Kagoshima University, Japanese language & Culture Classes for international students and so on.

Here at Kagoshima University, we also strive to engage in diverse and cutting-edge research. We encourage academic research pursuits in infection control, biological diversity, experimental animal models, the Milky Way Galaxy, and intractable cancer in order to promote our goals for innovation and solutions for community challenges. Additionally, we have pursued many interdisciplinary research opportunities, so that we may provide solutions to local issues regarding the islands, environment, food & health, water, and energy. As “the center of intelligence” in the community, Kagoshima University also promotes the development of quality lifelong learning, cultivation of human resources, joint research projects with the local community, and industry-university-government collaboration.

Our university is located in vibrant Kagoshima, considered as a significant gateway into the rest of Japan. We are surrounded by a diverse selection of natural environments, including volcanic mountains, blue seas, and beautiful islands (such as Yakushima, which has been identified as a world heritage site). As for the campus itself, it is situated in the center of the city, and provides on-campus facilities such as libraries, museums, botanical gardens, and research farms for public use.

I want to personally welcome you to Kagoshima University, and invite you to explore the diverse and unique educational experience we have to offer.



Yoshizane MAEDA
President

A handwritten signature in black ink that reads "Yoshizane Maeda". The signature is fluid and cursive.

Yoshizane MAEDA
President



Facts and Figures

● Undergraduate Faculties 9

● Graduate Schools 10

● Institutes for Education and Research
(including 12 education and research centers) 3

● Joint-Use Facilities 6

● Faculty Staff 1,156

● Administrative and Technical Staff 1,487



University Calendar

Academic Year

4/1 - 3/31 (April 1 - March 31)

Excluding Saturdays, Sundays and National Holidays

First Semester

4/1 - 9/30

(April 1 - September 30)

Spring Vacation

4/1 - 4/10

(April 1 - April 10)

Summer Vacation

8/1 - 9/30

(August 1 - September 30)



Second Semester

10/1 - 3/31

(October 1 - March 31)

Anniversary of University Establishment

11/15

(November 15)

Winter Vacation

12/25 - 1/8

(December 25 - January 8)

● Total Student Body 10,566

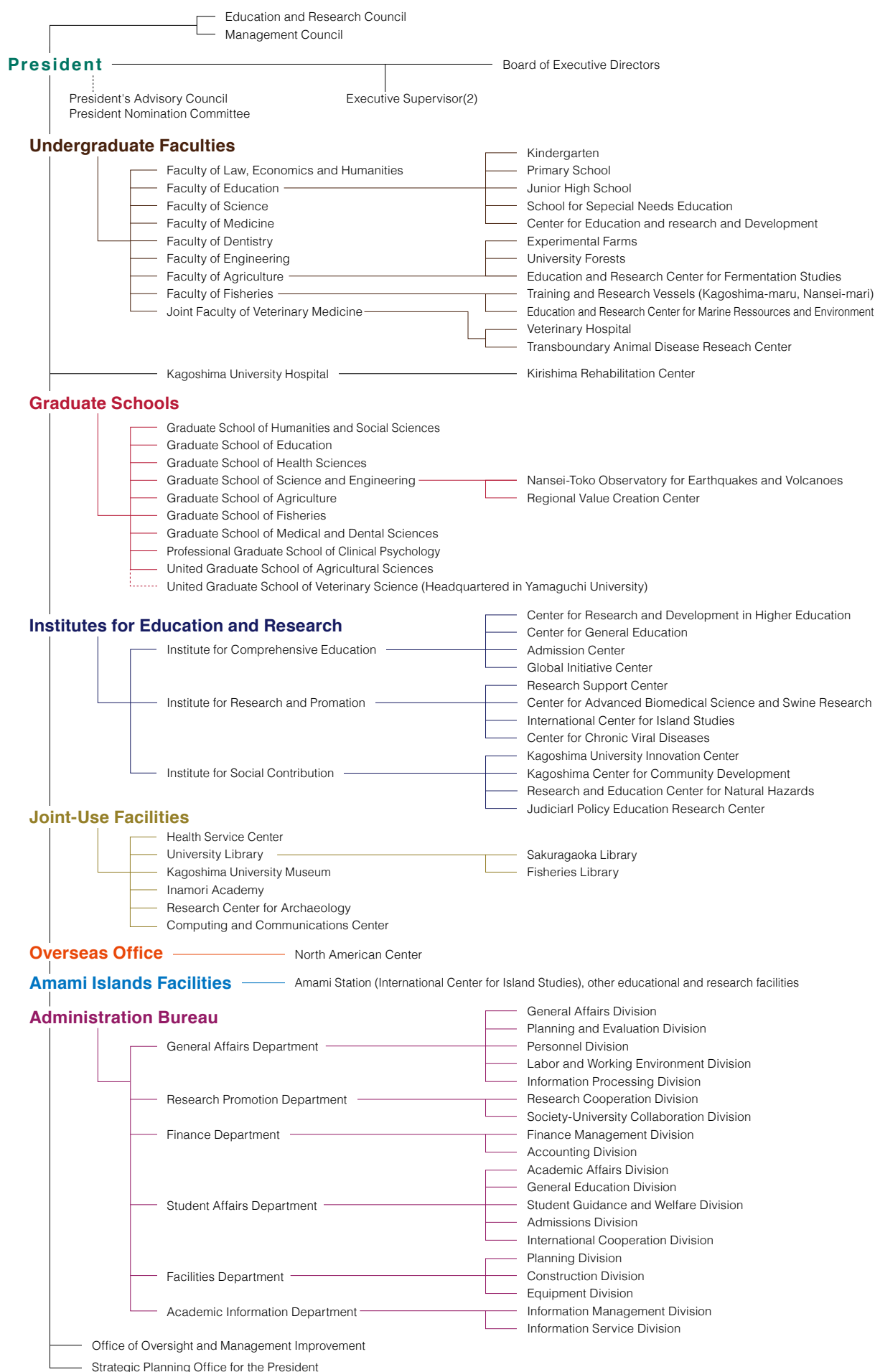
○ Undergraduates 9,025

○ Master 966

○ Doctoral 575

○ Foreign Students 301

ORGANIZATION





Kagoshima University Fundamental Values

Kagoshima University aims to contribute to the development of the society and the community with a spirit of self-sufficiency and enterprise, based on the geographical characteristics of Kagoshima as a part of the Asia-Pacific and according to the principles of academic freedom and diversity.

In addition, Kagoshima University aims to empower its graduates with a well-rounded education together with a strong ethical background as befitting a major center of research and development in the Southern Kyushu and the Nansei islands area. The university also aspires to find solutions to the problems of globalization and shrinking population that Japan is facing.

Strengthening of regional human resources development with a global perspective.

Kagoshima University conducts educational reform through promoting higher education utilizing regional characteristics and responding to the need to internationalize, reviewing relations between high schools and universities, enhancing the possibility for active learning, improving the quality assurance system for higher education and student support.

Promotion of academic research by utilizing the strengths and features of the university.

Kagoshima University develops academic research about regional society problems in the fields of island studies, the environment, food & health, water, energy and disaster prevention research, in addition to international-standard advanced research for infection control and experimental animal models.

Promotion of adult education and regional cooperation in accordance with the needs of the local communities.

As a center for intellectual and cultural lifelong learning, Kagoshima University is deeply committed to collaboration and development together with the regional organizations and the industry. Furthermore, the university takes the lead in promoting social contribution through the Institute for Social Contribution, aiming to improve the recurrent education and create innovation in the regional community.

Development of advanced education and research organizations.

Under the leadership of its President, Kagoshima University promotes advanced governance reforms. As the center of education and research in the community, the university also endeavors to reorganize its administration and to effectively redistribute the university resources through the restructuring of faculties and graduate schools and expanding its regional center on the Amami Islands.

COURSES OFFERED BY KAGOSHIMA UNIVERSITY

Faculty	Department, Sub-Divisions and Courses	Degree	Starting Term	Course Duration (year)
Faculty of Law, Economics and Humanities	Law, Economics and Sociology			
	Law	B	Apr	4
	Community Studies	B	Apr	4
	Economics	B	Apr	4
	Humanities			
	Area and Cultural Studies	B	Apr	4
Graduate School of Humanities and Social Science	Psychology	B	Apr	4
	Law	M	Apr, Oct [※]	2
	Economics and Social Systems	M	Apr, Oct [※]	2
	Humanistic-Environmental Cultural Sciences	M	Apr, Oct [※]	2
	International Cultural Sciences	M	Apr, Oct [※]	2
	Social Sciences	D	Apr, Oct [※]	3
Professional Graduate School of Clinical Psychology	Master of Clinical Psychology	P	Apr	2
Faculty of Education	Teacher Education Course			
	School Education	B	Apr	4
	Psychological Science Education	B	Apr	4
	Japanese Education	B	Apr	4
	Social Science Education	B	Apr	4
	Mathematics Education	B	Apr	4
	Science Education	B	Apr	4
	Music Education	B	Apr	4
	Art Education	B	Apr	4
	Health and Physical Education	B	Apr	4
	Technology Education	B	Apr	4
	Domestic Science Education	B	Apr	4
	English Education	B	Apr	4
Graduate School of Education	Education Practice Research Course	M	Apr	2
	Division of Professional Teacher Education	P	Apr	2
Faculty of Science	Mathematics and Computer Science			
	Pure Mathematics	B	Apr	4
	Applied Mathematics	B	Apr	4
	Computer Science	B	Apr	4
	Physics and Astronomy			
	Theoretical Physics of Solid and Complex Systems	B	Apr	4
	Solid State Physics	B	Apr	4
	Astronomy and Space Science	B	Apr	4
	Chemistry and Bioscience			
	Molecular Photonics and Colloid Science	B	Apr	4
	Organic and Biological Chemistry	B	Apr	4
	Molecular Biology and Bio-dynamics	B	Apr	4
	Earth and Environmental Sciences			
	Geological Science	B	Apr	4
	Arc Volcanology and Seismology	B	Apr	4
Faculty of Engineering	Environmental Analysis	B	Apr	4
	Biodiversity	B	Apr	4
	Mechanical Engineering	B	Apr	4
	Electrical and Electronics Engineering	B	Apr	4
	Architecture and Architectural Engineering	B	Apr	4
	Chemical Engineering	B	Apr	4
	Ocean Civil Engineering	B	Apr	4
	Information Science and Biomedical Engineering	B	Apr	4
Graduate School of Science and Engineering	Chemistry and Biotechnology	B	Apr	4
	Mechanical Engineering	M	Apr	2
	Electrical and Electronics Engineering	M	Apr	2
	Architecture and Architectural Engineering	M	Apr	2
	Chemistry, Biotechnology, and Chemical Engineering	M	Apr	2
	Ocean Civil Engineering	M	Apr	2
	Information Science and Biomedical Engineering	M	Apr	2
	Mathematics and Computer Science	M	Apr	2
	Physics and Astronomy	M	Apr	2
	Chemistry and BioScience	M	Apr	2
	Earth and Environmental Sciences	M	Apr	2
	Interdisciplinary Department of Science and Engineering	D	Apr, Oct	3

※ October Admission is available only for students from designated partnership universities.

Faculty	Department, Sub-Divisions and Courses	Degree	Starting Term	Course Duration (year)
Faculty of Medicine	School of Medicine	B	Apr	6
	School of Health Sciences			
	Course of Nursing	B	Apr	4
	Course of Physical Therapy	B	Apr	4
	Course of Occupational Therapy	B	Apr	4
Faculty of Dentistry	School of Dentistry	B	Apr	6
Graduate School of Health Sciences	Nursing	M	Apr	2
	Physical and Occupational Therapy	M	Apr	2
	Health Sciences			
	Nursing-Health Care Services	D	Apr	3
	Basic Research for Neurological Disorders and Physical Disabilities	D	Apr	3
Graduate School of Medical and Dental Sciences	Clinical Research for Psychiatric and Neurological Disorders	D	Apr	3
	Health Research	D	Apr, Oct	4
	Advanced Therapeutics	D	Apr, Oct	4
Faculty of Agriculture	Medical Science	M	Apr	2
	Special Course in International Food and Resource Sciences	B	Apr	4
	Agricultural Sciences and Natural Resources			
	Agronomy	B	Apr	4
	Horticultural Science	B	Apr	4
	Plant Pathology and Entomology	B	Apr	4
	Animal Sciences	B	Apr	4
	Agricultural Economics and Management	B	Apr	4
	Biochemical Science and Technology			
	Biochemistry and Biotechnology	B	Apr	4
	Food Science and Biochemistry	B	Apr	4
	Agronomical and Food Chemistry	B	Apr	4
	Shochu Science and Technology	B	Apr	4
	Environmental Sciences and Technology			
	Forest Ecology and Management	B	Apr	4
	Watershed Management and Forest Products Technology	B	Apr	4
	Environmental Systems Science	B	Apr	4
	Land and Water Conservation Engineering	B	Apr	4
Graduate School of Agriculture	Agricultural Sciences and Natural Resources	M	Apr	2
	Biochemical Science and Technology	M	Apr	2
	Environmental Sciences and Technology	M	Apr	2
Faculty of Fisheries	Special Course in International Food and Resource Sciences	B	Apr	4
	Fisheries Science and Technology			
	Aquatic Sciences	B	Apr	4
	Fisheries Resource Sciences	B	Apr	4
	Food Life Sciences	B	Apr	4
	Fisheries Economics	B	Apr	4
Graduate School of Fisheries	Aquatic Environment Sciences	B	Apr	4
	Fisheries Science and Technology	M	Apr	2
United Graduate School of Agricultural Sciences	Science of Bioresource Production	D	Apr, Oct	3
	Biological Science and Technology	D	Apr, Oct	3
	Resource and Environmental Science of Agriculture, Forestry and Fisheries	D	Apr, Oct	3
Joint Faculty of Veterinary Medicine	Veterinary Medicine			
	Basic Veterinary Science	B	Apr	6
	Pathogenetic and Preventive Veterinary Science	B	Apr	6
	Clinical Veterinary Science	B	Apr	6
United Graduate School of Veterinary Science	Basic Veterinary Science			
	Veterinary Anatomy	D	Apr, Oct	4
	Veterinary Physiology	D	Apr, Oct	4
	Veterinary Pharmacology	D	Apr, Oct	4
	Pathogenetic and Preventive Veterinary Science			
	Veterinary Pathology	D	Apr, Oct	4
	Veterinary Microbiology	D	Apr, Oct	4
	Public Health	D	Apr, Oct	4
	Animal Hygiene	D	Apr, Oct	4
	Clinical Veterinary Science			
	Veterinary Internal Medicine	D	Apr, Oct	4
	Veterinary Surgery	D	Apr, Oct	4
	Veterinary Reproduction	D	Apr, Oct	4

B : Bachelor's Degree M : Master's Degree D : Doctoral Degree P : Professional Degree

UNDERGRADUATE FACULTIES

Faculty of Law, Economics and Humanities

<http://kadai-houbun.jp/>

The multi-disciplined Faculty of Law, Economics and Humanities aims to produce graduates capable of dealing with society's problems using an in-depth knowledge of social and cultural issues. The Department of Law, Economics and Sociology is comprised of three courses. The course of Law has a curriculum to foster versatile legal thinking and planning skills. The Course of Community Studies has a curriculum to find problems in community and to promote cooperating formation for solving them through residents' participation. The Course of Economics has a curriculum to foster policy planning ability and management capability for developing regional economy. Finally, the Department of Humanities is comprised of two courses, Psychology and Area and Cultural Studies, which aim to provide students with the knowledge and skills to understand the world we live in and help shape its future.

Faculty of Science

<http://www.sci.kagoshima-u.ac.jp/en/index.html>

The history of the Faculty of Science goes back almost 100 years. The Seventh Higher School, Zōshikan founded in 1901 is a forerunner of the faculty. The present faculty was established in 1965 and plays important roles in both education and research in the field of fundamental natural science, as the only such faculty in southern Kyushu. The faculty is composed of four departments, Mathematics and Computer Science, Physics and Astronomy, Chemistry and Bioscience, and Earth and Environmental Sciences. The educational aim of the faculty is to cultivate scientific interest and give more specialized knowledge in each field. This faculty has produced more than 4,500 graduates until now, and they continue to contribute to various scientific fields.

Faculty of Dentistry

<http://w3.hal.kagoshima-u.ac.jp/index.html>

The Faculty of Dentistry was founded in 1977 with the purpose of being the leading regional center for dental education, research and treatment in southern Kyushu. The curriculum is focused primarily on the causes, prevention, and cures of caries, periodontal disease, occlusal anomalies, tooth loss, external injury-aplasia-pain and tumors in the oral and maxillofacial areas. The school aims to train highly talented students who can contribute locally and internationally in all fields of dental medicine. In addition to their dental education, students are encouraged to investigate general medical subjects such as internal medicine and surgery, as well as general academic subjects. Through the unique elective program, students may join research projects in each laboratory in order to develop original ideas.

Faculty of Education

<http://www.edu.kagoshima-u.ac.jp/>

The Faculty of Education originated from a teacher training school founded in 1875. The present institution dates back to 1949 and was expanded in 1994 to include a graduate school. The curriculum stresses individual research and encourages the deepening of specialist knowledge through lectures, seminars, experiments, practical training, field work, the observation of child development, performance, and the practical training of physical education, arts and music. The faculty facilities are high quality, including such sports facilities as an athletics track, a multipurpose playing field, tennis courts, two gymnasiums, martial arts rooms, and a swimming pool. The faculty members are eager to educate and train the excellent teachers of the future.

Faculty of Medicine

<http://www.kufm.kagoshima-u.ac.jp/>

The Faculty of Medicine originated with a British-style medical school founded in 1869. Dr. William Willis, the first principal of that school, introduced western medicine to Kagoshima and trained many Japanese students. Today, the faculty is comprised of two schools, namely, the School of Medicine and the School of Health Sciences. The latter was established in 1998 with the aim of training medical technicians of the highest standard. The faculty cultivates highly qualified professionals and has made substantial contributions to the advancement of medical science and to the health and welfare of people across Japan. It aims to foster personnel who are highly studious, possess well-rounded character, contribute to the local community, and hold an international perspective on medicine and healthcare.



Faculty of Engineering

<http://www.eng.kagoshima-u.ac.jp/>

The Faculty of Engineering provides substantive knowledge and professional skills to each student deeply interested in engineering, manufacturing, or technological development. Students will acquire the ability to solve many problems in today's global society, using their knowledge and skills practically. The faculty has been promoting educational reform to meet international standards and has been cultivating talent among its students, so that they may play active roles in the betterment of the world.

The Faculty of Engineering is composed of seven departments that cover the main fields of manufacturing. The Faculty is committed to training professional engineers, leading in social reform, creating intellectual infrastructure, and developing innovative manufacturing.

Faculty of Agriculture

<http://www.agri.kagoshima-u.ac.jp/>

The Faculty of Agriculture dates back over 100 years to 1908. Today, the faculty consists of three departments and a new special course : Agricultural Sciences and Natural Resources, Food Science and Biotechnology, Environmental Sciences and Technology, and a special agricultural sub-course in International Food Resources Sciences. In addition, there are three research institutes on and outside the university campus : the Experimental Farms, the University Forests, and the Education and Research Center of Fermentation Studies. The undergraduate course provides students with a wide ranging basic education in agriculture, including field training, laboratory experiments and various research activities. For those seeking the Master of Agriculture degree, a two-year graduate course is available.

Faculty of Fisheries

<http://www.fish.kagoshima-u.ac.jp/>

The Faculty of Fisheries is composed of five fields: Aquatic Sciences, Fisheries Resource Sciences, Food Life Sciences, Fisheries Economics, and Aquatic Environment Conservation Sciences. The faculty has contributed to the societies considerably through its graduate production and applied research on issues ranging from the aquatic environment and resources to their industrial utilization and consumption. The faculty has focused on field-oriented education and research, as well as agenda on sustainable development and rational utilization of fishery resources, conservation of aquatic environment and international contribution and engagement in local fisheries. Moving forward, the faculty hopes to maintain its status as a world-renowned fisheries education and research institution, encompassing the tropical and sub-tropical aquatic belt across the globe.

Joint Faculty of Veterinary Medicine

<http://www.vet.kagoshima-u.ac.jp/>

The Joint Faculty of Veterinary Medicine was founded in 2012 as the 9th faculty of Kagoshima University. The Faculty offers inter-university curricula with Yamaguchi University that trains experts with deep humanity to follow a moral code of conduct and to contribute to global society. The Veterinary Teaching Hospital and the Equine Medical Center contribute to the local community as the main animal treatment facilities for both companion and farm animals in the region. The Experimental Animal Center conducts humane care and use program of animals to enhance animal well-being and scientific quality in research and education on veterinary medicine.



GRADUATE SCHOOLS



Graduate School of Humanities and Social Sciences

<http://www.leh.kagoshima-u.ac.jp/>

The Graduate School of Humanities and Social Sciences offers four master's degree courses in Law, Economics and Social Systems, Humanistic-Environmental Cultural Sciences and International Cultural Studies and a doctoral degree course in Social Sciences.

The school promotes a variety of research areas and has developed high quality postgraduate programs centered mainly on community-based subjects, which enhance students' practical expertise in their specialized fields. In order to meet the challenges of providing higher education that is accessible to mature students from the local community, classes are also offered in the evening (to enable those with full-time jobs to enroll) and off-campus in the access centers in Amami and Tokunoshima.



Graduate School of Health Sciences

<http://www.kufm.kagoshima-u.ac.jp/~g-health/>

The Graduate School of Health Sciences aims to develop professionals with highly advanced knowledge and skills in health sciences, and leading administrators who can carry out excellent educational and research activities. Additionally the school trains personnel who can both contribute to health care on remote islands and globally, and disseminate the results and data of educational research widely. In April 2003, a master's course was established, and in April 2005, a doctoral course was created. The department's educational goals are to develop high-quality educators and researchers to carry out original research and efficiently provide education to develop students' competencies. Moreover, the school focuses on the development of personnel who contribute to community health care in rural, island, and international settings.



Graduate School of Agriculture

<http://acel.agri.kagoshima-u.ac.jp/>

Graduate School of Agriculture was established in 1966. It offers the following three courses: Agricultural Sciences and Natural Resources, Biochemical Science and Technology, and Environmental Sciences and Technology. Located in the food production base of Japan with its immense diversity of biological and natural resources, this school focuses on a number of relevant topics such as environmentally friendly food production techniques, clarification and application of biological functions, conservation and reformation of natural ecosystem, and the revitalization of rural societies. Furthermore, the school promotes research and education for new technology in the field of agriculture, forestry, and food industry by introducing bio-technology and advanced techniques. Overall, the school has been designed to develop students into highly specialized technicians and advanced researchers.



Graduate School of Education

<http://www.edu.kagoshima-u.ac.jp/>

In April 2017, Graduate Course of Education of Kagoshima University newly established "Division of Professional Teacher Education Course" in addition to the Education Practice Course, which was established beforehand.

Education Practice Course aims at fostering teachers and human resources who can possess broad views for academic fields through comprehensive lectures and research method trainings based on actual problems in local areas. The graduate students will be given "Master's Degree of Pedagogy" after completing the designated subjects.

"Division of Professional Teacher Education" aims at fostering prominent professional teachers, who will be able to teach and learn by themselves over a lifetime as a considerate practitioner of education needed for the future. The graduate students will be awarded M. Ed (Master of Education) after completing the designated subjects.

Furthermore, those teachers, who have already possessed the first grade teacher's license for elementary, junior high or senior high school, will be able to acquire the specialized teacher's certificate.



Graduate School of Science and Engineering

<http://grad.eng.kagoshima-u.ac.jp/>

The Graduate School of Science and Engineering aims to produce professionals who dedicate themselves to scientific pursuits, uphold high ethical standards, and take on difficult challenges. Students are provided with an education that meets the changing needs of contemporary society in both content and application. The curriculum includes theories ranging from basic to applied science and engineering, and students are supported through advanced studies. The Graduate School of Science and Engineering develops students into engineers, researchers, and other professionals that will positively contribute to the future of society. Such professionals will be required to make ethical judgments on sensitive issues, to be knowledgeable about the nature of the world, and to be responsive to the advancement and diversification of the natural sciences.



Graduate School of Fisheries

<http://www.fish.kagoshima-u.ac.jp/>

The Graduate School of Fisheries is composed of five fields: Aquatic Sciences, Fisheries Resource Sciences, Food Life Sciences, Fisheries Economics, and Aquatic Environment Conservation Sciences. It provides enriched education. Some course lectures are conducted in English to develop the world-wide knowledge for the students. A high percentage of foreign students will continue their researches to obtain a Doctoral degree at our United Graduate School of Agricultural Sciences. A variety of international activities such as collaboration with some universities in the Southeast Asian countries have been conducted in many years. It leads enhancement of international credibility of higher education in Japan. In addition to conventional academic activities, the school has offered international technical dissemination and transfer, and the participation in official development assistance projects over the world.

Graduate School of Medical and Dental Sciences

<http://www2.kufm.kagoshima-u.ac.jp/>

The Graduate School of Medical and Dental Sciences aims to respond quickly to the many demands of society and to carry out high level education and research efficiently, while placing priority on medical ethics. The school strives to apply a flexible and wide-ranging scope to medical research and to the development of treatments for the cure and prevention of human disorders. As central goals, this school hopes to foster leading researchers and educators in life science fields and create a center of education and research in medicine and life science with particular relevance to the local region. In addition to graduates in the fields of medicine or dentistry, the school welcomes graduates from a diverse range of disciplines.

Professional Graduate School of Clinical Psychology

<http://www.leh.kagoshima-u.ac.jp/kumcp/>

This School was established in April 2007 as an independent graduate course offering a professional degree program that specializes in training clinical psychologists. We provide advanced professional education based on a curriculum of lectures, seminars and practical training to foster clinical psychologists who can contribute to people's mental well-being. On-campus clinical psychology training takes place inside the annexed counseling room. Off-campus training takes place at four locations over a 2-year period, covering the educational medical, and welfare, judicial areas. Fifteen students take a two-year course and obtain an M.A. in Clinical Psychology, which is a professional degree. Graduate from this program possess a very high pass rate in employment examinations for clinical psychology and finds employment in Japan.

United Graduate School of Agricultural Sciences

<http://homeugs.agri.kagoshima-u.ac.jp/>

The United Graduate School of Agricultural Sciences (UGSA) at Kagoshima University was established in 1988. The UGSA is composed of four master programs among three allied universities: Saga University, Kagoshima University, and the University of the Ryukyus. The aim of UGSA is for students to master advanced agricultural or fisheries sciences through study and research involving regional or international issues. Our doctoral research activities focus on food production and environmental conservation based on advanced life science or marine science. Successful graduates of this program are awarded a Doctorate Degree of Philosophy.

United Graduate School of Veterinary Science (Headquartered in Yamaguchi University)

<http://ds22.cc.yamaguchi-u.ac.jp/~renju/e.html>

The United Graduate School of Veterinary Science was established in 1990. The school is operated in cooperation with the departments of Veterinary Science at Yamaguchi University, Tottori University, and Kagoshima University. The school offers doctoral degrees in the field of Veterinary Medicine. This four-year program aims to train outstanding researchers and technologists with expert knowledge and advanced practical skills, who will then contribute to the progress of veterinary medicine and its applied sciences as well as the development of related industries. The school promotes international relations and accepts many international students from various countries





University Libraries

<http://www.lib.kagoshima-u.ac.jp/>

The University Libraries consist of the Central Library, the Medical Library, and the Fisheries Library. The aim of the libraries is to provide academic materials and a range of services, including electronic information services, to assist university students, faculty, and staff with their studies, research, and teaching. Electronic information services can be used to locate books and journals in the collections and find information in a variety of databases throughout the campus network.

The Central Library houses the Tamazato Bunko, a valuable collection of manuscripts and xylographic books from the pre-Meiji era that originally belonged to the Regent of Satsuma, SHIMADZU Hisamitsu.



Center for General Education

<https://www.kagoshima-u.ac.jp/educenter/>

The Center for General Education, first established in October of 2003, has undergone restructuring as of April 2017. The overall purpose of the Center for General Education is to further the enhancement and development of education at Kagoshima University through university-wide liaison and coordination to design, formulate and implement planning for both general education and curatorial courses.

Since the early days of the 'Daishichikou school system' (circa 1901), Kagoshima University has had a long tradition of providing a unique academic experience, attuned to and innately connected to the Kagoshima region. In addition to this, our freshman program, based upon the tenet of contributing in an increasingly globalized society, places particular focus on global studies, and on fostering the student's ability to strive for a better society.

The cornerstone of our undergraduate education at Kagoshima is fostering graduates who will go on to positively contribute to civil society, both at home and abroad, based upon the principles of respect for truth and ethics, and to be well equipped to face whatever challenges might arise in the future.



Inamori Academy

<http://www.inamori.kagoshima-u.ac.jp/>

The Inamori Academy is endowed by generous donations from Kyocera Corporation and its founder and Chairman Emeritus, alumnus Dr. Kazuo Inamori. The Academy was originally established in 2005 as the Inamori Academy of Management & Technology and expanded in 2008 to provide courses containing lectures on Dr. Inamori's works and philosophy to undergraduate students via general education. The central mission of the Inamori Academy is to develop leadership potentials and skills of university students, based on Inamori Philosophy, toward to 21st Century Citizenship and Spirit of Enterprise.



Global Initiative Center

<http://www.gic.kagoshima-u.ac.jp/>

The Global Initiative Center, established in April 2016, consists of the Planning and Network Division, the Study Abroad Division, and the International Student Division. It aims to promote the globalization of Kagoshima University in education and research. The Planning and Network Division promotes collaborative efforts in research and education with overseas universities and research institutions and provides information on our university internationally. The Study Abroad Division provides P-SEG, an educational program that provides students with necessary skills and knowledge in global contexts and information on study abroad sessions. The International Student Division is responsible for the "Study Japan Program," offering Japanese language and cultural education, counseling for academic and non-academic affairs, and promoting exchange activities among international students, Japanese students, and the local society.



Kagoshima Center for Community Development

<http://www.kagoshima-u.ac.jp/coc/>

Kagoshima Center of Community Development was established in October 2014 in order to enhance Kagoshima University's contribution towards clarifying and resolving various regional problems for the local community and government. The local community and government are facing serious problems such as declining population, and the activation of regional industry and agriculture, etc. The Kagoshima Center of Community Development positively contributes towards education, utilizing research from Kagoshima University and cooperation with related local governments. It is necessary for Kagoshima University to make serious efforts to pursue solutions for regional problems and promote activity and sustainability among the local community and government.



Kagoshima University Museum

<http://www.museum.kagoshima-u.ac.jp/>

The Kagoshima University Museum (KAUM) was established in 2001 as the seventh national university museum in Japan. For the last half-century, Kagoshima University researchers have collected samples and artifacts related to humanities, social sciences, and natural sciences. The aims of KAUM are to preserve these important objects for use in education and research, and to make a new collection from fields. KAUM also introduces the research activities of Kagoshima University through exhibitions, public lectures and publications. The Exhibition Room is open to the public as a permanent display. It consists of four sections: 1) archaeological sites in Kagoshima University, 2) education and research history of Kagoshima University, 3) mineral resources of the earth, and 4) marine fossils from Kagoshima.



International Center for Island Studies

<http://cpi.kagoshima-u.ac.jp/>

The International Center for Island Studies promotes interdisciplinary research on island-related issues in the Asia-Pacific region. It has the support of researchers from Kagoshima University and other domestic and overseas universities and institutions. The results of its studies are combined to enhance comprehensive understanding of island environments and further the welfare of island communities. These objectives are pursued primarily through three interrelated projects: natural and social environments of islands and their sustainability; island development problems relating to medical care, information provision and social change; self-sustaining development in islands through technological progress in fields such as agriculture, fisheries and education. The center has a station in the Amami Islands, which supports research and education activities and advances regional goals.



Research Support Center

<http://gene4.agri.kagoshima-u.ac.jp/>

The Research Support Center was renamed in April 2017 in accordance with the reorganization of the previous Natural Science Center for Research and Education, which originated from the Frontier Science Research Center established in April 2012. The center has five branches related to the fields of animal science, biotechniques, instrumental analysis, isotopes, and environmental safety, and has five laboratories for animal science, gene research, instrumental analysis, isotope science, and environmental safety. These are all designed to support the high level of natural science research and education at the university. The center aims to promote and support research and education activities in all fields of natural sciences, especially life science, environmental science, and material science.



Center for Advanced Biomedical Science and Swine Research

<http://gene4.agri.kagoshima-u.ac.jp/minibuta/>

The Center for Advanced Biomedical Science and Swine Research (CABSS Director: Professor Kazuhiko Yamada) is a major translational research center at Kagoshima University and was formerly part of the Frontier Science Research Center (FSRC). In order to advance priority research projects, especially those with the focus of bringing the "bench to the bedside," the CABSS became independent from the FSRC in April 2012. The CABSS consists of three research divisions: (1) Organ Replacement and Xenotransplant Surgery; (2) Gene Expression and Regulation; and (3) Cancer and Regeneration.



Kagoshima University Innovation Center

<http://www.rdc.kagoshima-u.ac.jp/>

The Kagoshima University Innovation Center promotes cooperation among industries, government, and the university in order to positively contribute to the community. The center is comprised of four divisions. The Liaison Office matches university research activity with social needs, and promotes technology transfer developed with outside organizations and community feedback. The Intellectual Property Office promotes and manages the discovery, protection, maintenance, and utilization of intellectual property generated from the university's educational and research activities. Venture Business Laboratories aid incubation of entrepreneurial business ventures based on academic research and provide business practice lectures. COC+ Promotion Department is intended to develop an educational program that teaches the skills needed for successful work in local business and community.



Research and Education Center for Natural Hazards

<http://bousai.kagoshima-u.ac.jp/>

Established in June 2011, The Research and Education Center for Natural Hazards investigates the mechanisms and causes of natural disasters and examines measures for disaster prevention in Southern Kyushu and the Nanseishoto island chain.

The Research Division conducts research on natural hazards, floods, landslides, volcanic eruptions, earthquakes, tsunamis, radiation, disaster management, emergency evacuations, mental health, medical care, and reconstruction. The Education Division plans and manages lectures and training for general and basic course students, in addition to holding an open seminar and symposium on natural disaster prevention. Additionally, human resources are developed to prevent and mitigate disasters. The Regional Cooperation Division provides proposals and cooperates with local government, communities, and media to prevent and mitigate disasters.



Computing and Communications Center

<http://www.cc.kagoshima-u.ac.jp/>

The Computing and Communications Center is a core facility of computing and networking at Kagoshima University. It is also a major research and development center for information technology, consisting of three research divisions. The Research Division of Media and Information Technology plays a central role in planning, management and research concerning computing systems for education and the campus computer network. The Research Division of Academic Information Resources researches and develops proper usage of information technology for cooperation both inside and outside the university. The Information Systems Division is in charge of information security in Kagoshima University, and offers strategic planning for campus wide information systems and investigates solutions for the university through the deployment of advanced technology.

STRATEGIC STUDY FIELDS

The research policy of Kagoshima University promotes collaboration and expansion in order to meet regional demands. To the south of Kagoshima are the Nansei Islands, stretching over 600 km of sea and including the famous Yakushima island (a UNESCO World Heritage Site) and the biologically diverse Amami Islands. Additionally, the prefecture has a rich natural environment that includes active volcanoes, such as Mt. Sakurajima and the Kirishima Mountains. Kagoshima University develops cutting-edge research in order to utilize these regional features and solve challenges in revitalizing the local communities. Cross-sectional and interdisciplinary research projects have been conducted in the following fields:

Research for Solving Regional Society Problems

Islands

Kagoshima University aims to contribute to the development of the communities and their globalization, their industrial development, the enhancement of the medical welfare, environmental protection and the betterment of the educational, cultural and informational environment in the area of South Kyushu and the Asia-Pacific region.

Environment

Kagoshima University conducts the Kagoshima Environment Project, which tackles the environmental issues within the community, and the Biological Diversity Project, which conducts university level research regarding biological diversity in the area of Yakushima island (registered as a World Natural Heritage Site) and supports the effort to designate the Amami islands as World Natural Heritage as well.

Food and Health

Kagoshima University promotes scientific research on the health properties of local agricultural and fishery products and clarifying their effects on lifestyle-related diseases and senility syndrome. In addition, this project aims to develop dietary education and the production and distribution systems which enable us to guarantee food safety as well as to build a sustainable and recycling-based farming and fishing villages which are able to cope with the current problems.

Water

Kagoshima University conducts research regarding water-related issues particular to Kagoshima, such as water-use and water resources development/preservation, the flow of water in volcanic areas, floods and landslides caused by heavy rain and water pollution in the South Kyushu area.

Energy

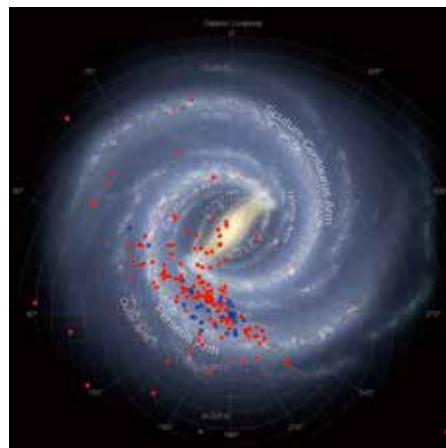
Kagoshima University aims to aid in the development of renewable energy, such as biomass, solar and ocean energy, in addition to developing solutions regarding local revitalization, environment conservation and collaboration between agriculture and industry by establishing systems to distribute and utilize energy from renewable sources.

Volcano & Earthquake Disaster Prevention

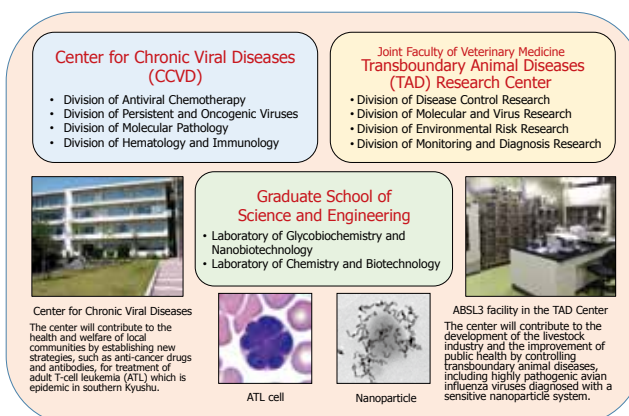
Kagoshima University endeavors to strengthen regional disaster prevention efforts in the Southern Kyushu and the Nansei Islands area through working with the regional community in addressing challenges such as factual investigation, prediction, education and emergency measures for disaster prevention and post-disaster recovery and reconstruction.

International-Standard Advanced Research

Kagoshima University is involved in international-standard advanced research for infection control, biological diversity, experimental animal models, the Milky Way Galaxy, and intractable cancer.

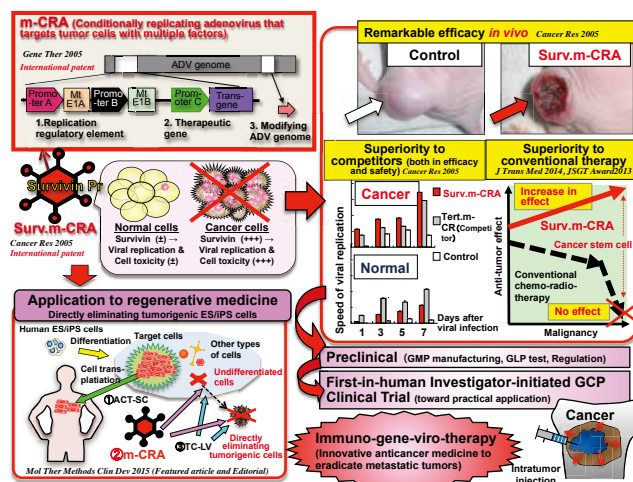


▲ A face-on view of the Milky Way Galaxy. The spots are object locations measured with VERA (blue) and the university's 1m Infrared telescope (red).



▲ Advanced Research on Infection Control (Concept)

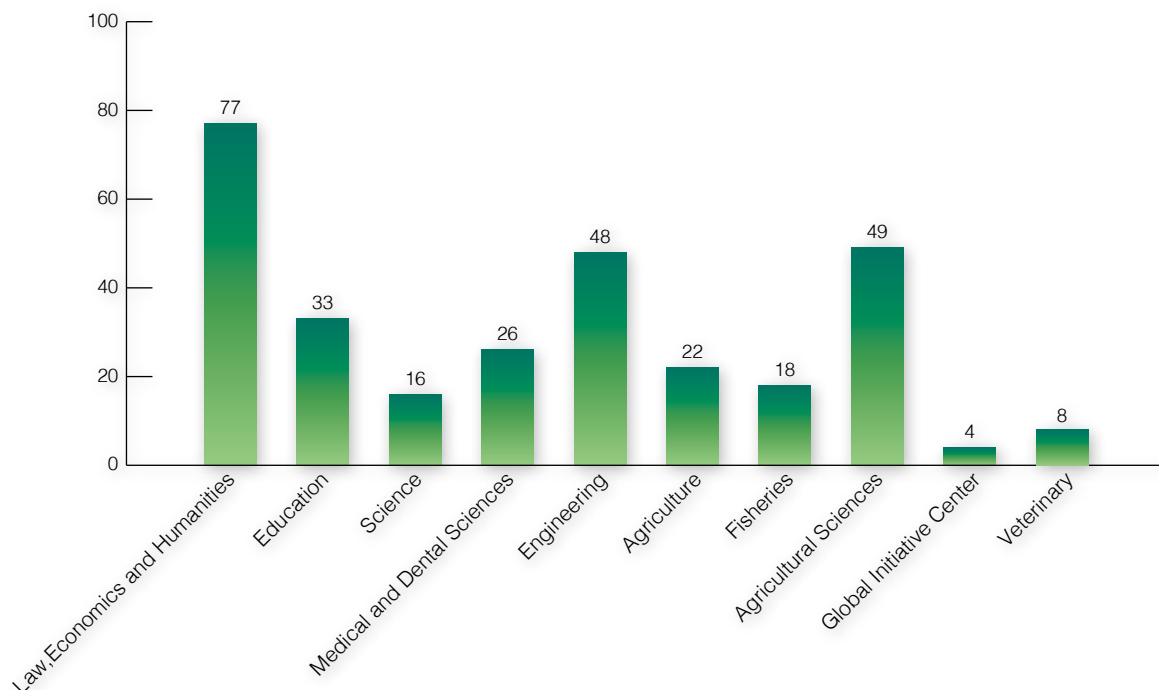
The study group is aiming at establishing defense systems against menacing infectious pathogens in the Kagoshima area, such as HTLV-1 and avian influenza virus.



▲ Development of original gene-viro-therapy as an innovative therapy for intractable cancers toward clinical and practical application

NUMBER OF INTERNATIONAL STUDENTS

According to Field of Study



According to Nationality

Asia	China	130	Korea	31	Vietnam	23	Bangladesh	20	Indonesia	18
	Malaysia	9	Philippines	7	Sri Lanka	5	Taiwan	4	Thailand	4
	Myanmar	3	Nepal	3	Pakistan	2				

Middle East	Turkey	3	Iran	1
-------------	--------	---	------	---

Africa	Egypt	6	Benin	2	Tanzania	2	Eritrea	1	Gabon	1
	Nigeria	1	Zimbabwe	1						

Oceania	Fiji	3	Australia	2	Papua New Guinea	1	Solomon Islands	1
---------	------	---	-----------	---	------------------	---	-----------------	---

Americas	Brazil	4	America	1	Argentina	1	Bahamas	1	Panama	1
	Peru	1								

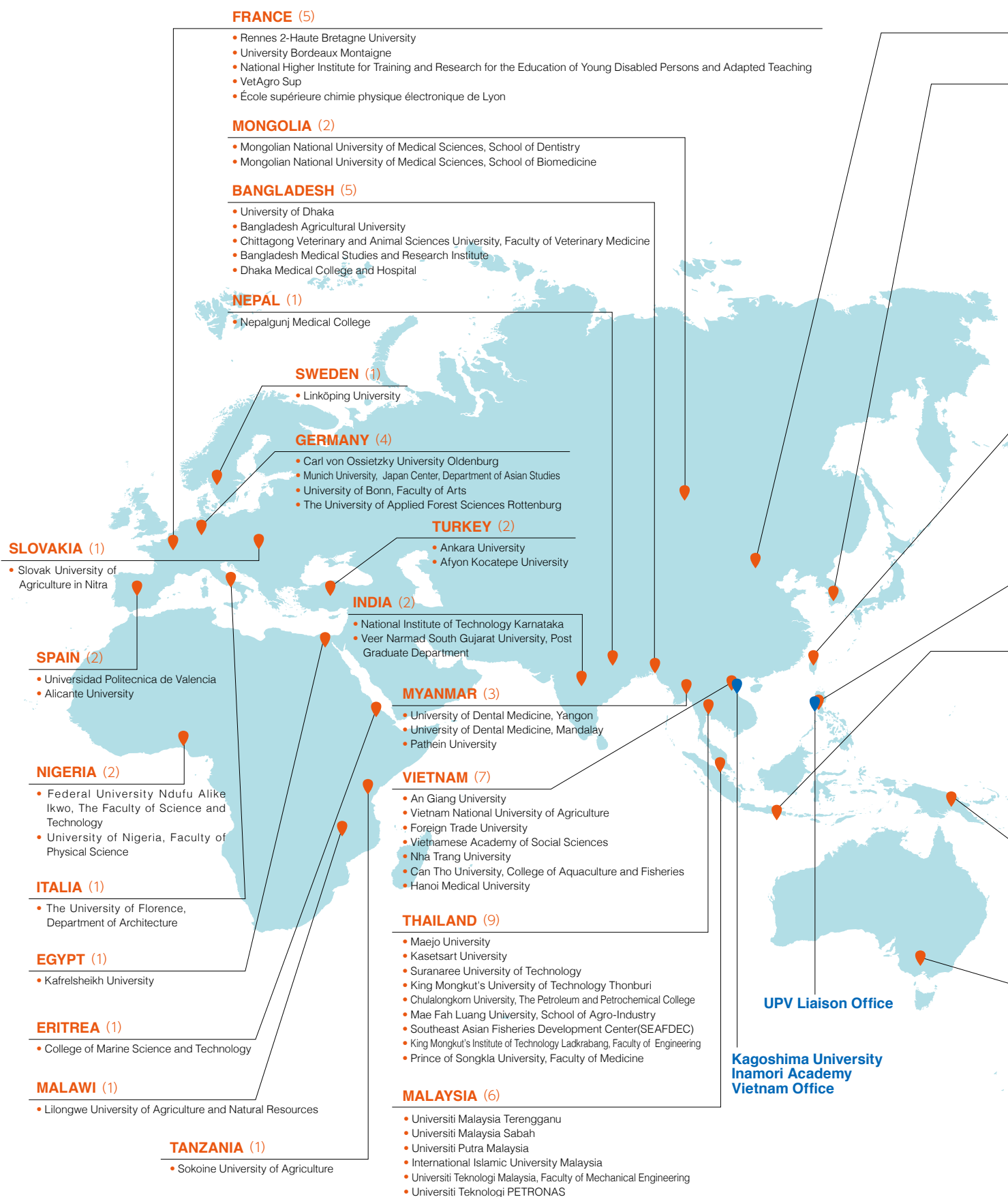
Europe	France	3	Germany	3	Hungary	1	Spain	1
--------	--------	---	---------	---	---------	---	-------	---



OVERSEAS PARTNER INSTITUTIONS / OVERSEAS OFFICES

Academic Exchange Agreements with 135 Institutions in 32 Countries and Regions and 3 Overseas Offices

Kagoshima University has partnered with a number of overseas institutions in order to advance education, research, and student exchange. It also has three overseas offices in USA, Philippines, and Vietnam in order to promote academic exchange between these countries and Kagoshima University.





FACILITIES

Health Service Center <http://hsc.kuas.kagoshima-u.ac.jp/>

The Kagoshima University Health Service Center is staffed with medical doctors, nurses, counselors, and social workers for the physical, mental, and educational well-being of Kagoshima University community.

It offers regular general check-ups (from mid-April, for three weeks), special examinations, health counseling, advice on health maintenance, and first aid treatment. Medical services of the Health Service Center are usually free of charge and those visiting the center do not need to show a health insurance card.



Kagoshima University International Residence Hall

Kagoshima University International Residence Hall provides accommodations for overseas students and academics engaged in study or research at Kagoshima University. It is also intended as a setting for international cultural exchange.

With a fine view to the east of the volcano Sakurajima, the hall is situated in a quiet residential district adjacent to Faculty of Fisheries. Public transport is within easy reach, with the nearest streetcar stop five minutes away on foot and the nearest bus stop just a minute away. It is a 15-minute walk to the Korimoto campus.



Kagoshima University International Lodge

Kagoshima University International Lodge was constructed in December 2003 in Shimo-arata district adjacent to the Faculty of Fisheries on the other side of the International Residence Hall as a donation of Kagoshima University's 50th Anniversary for overseas scholars and guests visiting Kagoshima University. The building is two stories on a steel framework and consists of two types of 16 single rooms for long and short term stay. Its total floor area is 502m² and each room is equipped with a TV, refrigerator, and other necessary furniture.



Inamori Auditorium

The Inamori Auditorium was constructed in 1994 with a special donation by alumnus Dr. Kazuo Inamori and was designed by renowned architect Tadao Ando. Its large lecture hall, named for Dr. Inamori's parents Kimi and Kesa, is widely used for university courses and events.



Kagoshima University Hospital <http://com4.kufm.kagoshima-u.ac.jp/>

The Kagoshima University Hospital consists of 17 clinical centers, including the Cardiovascular Center, the Digestive Disease Center, the Neurology Center and the Respiratory and Stress Care Center in addition to 39 central clinical facilities. There are also Division of Pharmacy, Division of Nursing, Division of Clinical Technology and the Administration Office.

In 2009, the new central clinical building, including the Surgical Center with 16 operation rooms, Intensive Care Units with 14 isolated rooms, Clinical Laboratory and Medical Material Management Center, was completed. In addition, the new 9-story ward building (C building) was completed in 2013. A clinical training center is installed in the eighth floor, and heliport is installed on the roof.



Core Educational Facility for Shared Use: T/V Kagoshima-maru, Training Vessel of Faculty of Fisheries

The new training vessel, Kagoshima-maru (IV) was completed on March 30, 2012 and put into commission in the 2012 academic year. T/V Kagoshima-maru is one of the latest academic vessels, which has unique high-maneuvrability, e.g. diagonal transfer and pin-point turn around with no forward motion. It enables experiments and oceanographic surveys which used to be difficult on rough seas, and enriches new education and research, due to the installation of the latest observation devices onboard. This vessel is the successor of the last T/V Kagoshima-maru (III) which had been authorized as the first 'Core Educational Facility for Sharing Use (CEFSU)' by the Minister of Education, Culture, Sports Science and Technology, and is designated as 'CEFSU for on-board education on tropical and sub-tropical waters.' This authorisation reflects the excellently accumulated achievements by T/V Kagoshima-maru and Kagoshima University, which have been active around the concerned region for many years. Because of the designation, T/V Kagoshima-maru is now responsible to educate students of not only Kagoshima University but also other institutions. Students of other institutions have become able to receive high quality on-board training and attain credits. T/V Kagoshima-maru is expected to play a role as the center of education in the seas, including Southeast Asian and Pacific waters.



Core Educational Facility for Shared Use: Takakuma Experimental Forest

In 1909, the Takakuma University Forest (Tarumizu City) was established in the Kagoshima College of Agriculture and Forestry, a predecessor of Kagoshima University, as a place for forestry education and research. The total area is 3,061ha (accounting for 19% of Tarumizu City and 84% of the property of Kagoshima University). The planted trees originate from the 100 year old endeavors of our predecessors. At present the planted trees (consisting of Japanese cedar and Japanese cypress originally from Yakusugi) occupy approximately one-third of southern Kyushu, while the rest is covered in natural forests of lush evergreen trees.

The forest is used mainly for students taking courses in forest science and courses for practical training and research. Since around 2000, the forest has also been used for courses in general education (other than the practical training courses) and in other university subjects. Other regional contributions have included forest education programs for younger students, and forest technician training for adults, which have greatly expanded the forest's uses.

Based on these previous accomplishments, the Ministry of Education has recognized the Takakuma Experimental Forest as a Joint Usage Educational Center since 2014, in order to further develop effective practical uses of the forest. Its uses as a center will include learning from Kagoshima's 100 year old forests, and environment/disaster prevention education.

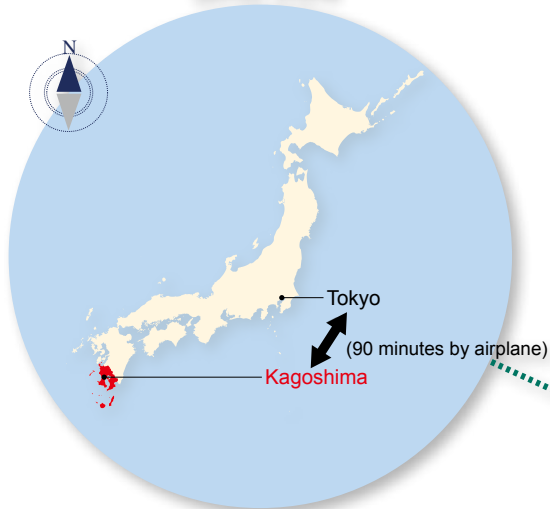
The previous year had a total of 702 people from 24 universities using the forest. In 2016 there are plans to further forest applications in diverse fields such as forestry education, environmental education, disaster prevention education, plant and animal education.



CAMPUS GUIDE

The campuses of Kagoshima University are located in Kagoshima City, which has a population of more than half a million and is the most populous urban area in the southernmost part of Japan.

JAPAN



KAGOSHIMA



KAGOSHIMA CITY



Korimoto Campus

Administration Bureau
 Faculty of Law, Economics and Humanities
 Faculty of Education
 Faculty of Science
 Faculty of Engineering
 Faculty of Agriculture
 Joint Faculty of Veterinary Medicine
 Graduate School of Humanities and Social Sciences
 Graduate School of Education
 Graduate School of Science and Engineering
 Graduate School of Agriculture
 Professional Graduate School of Clinical Psychology
 United Graduate School of Agricultural Sciences
 Central Library
 Health Service Center
 Center for General Education
 Center for Research and Development in Higher Education
 Inamori Academy
 Admission Center
 Global Initiative Center
 Kagoshima University Museum
 International Center for Island Studies
 Research Support Center
 Center for Advanced Biomedical Science and Swine Research
 Kagoshima Center for Community Development
 Kagoshima University Innovation Center
 Research and Education Center for Natural Hazards
 Computing and Communications Center
 Research Center for Archaeology
 Judicial Policy Education Research Center



Sakuragaoka Campus

Faculty of Medicine
 Kagoshima University Hospital
 Faculty of Dentistry
 Graduate School of Medical and Dental Sciences
 Graduate School of Health Sciences
 Sakuragaoka Library
 Health Service Center
 Center for Chronic Viral Diseases



Shimoarata Campus

Faculty of Fisheries
 Graduate School of Fisheries
 Fisheries Library
 International Residence Hall
 International Lodge



Kagoshima University
1-21-24, Korimoto Kagoshima 890-8580, Japan
URL : <http://www.kagoshima-u.ac.jp/>

KAGOSHIMA UNIVERSITY

Outline 2016-2017