



National University Corporation
**KAGOSHIMA
UNIVERSITY**

2023



kagoshima university



Contents

Message from the President	1
Facts and Figures	2
Kagoshima University Fundamental Values.....	3
Basic Policy of Internationalization at Kagoshima University	4
Organization	6
Strategic Study Fields	7
Courses Offered by Kagoshima University.....	8
Undergraduate Faculties	10
Graduate Schools	12
Institute for Education and Research.....	14
Joint - Use Facilities	15
Facilities	18
Other Institutions.....	21
Overseas Partner Institutions / Overseas Offices.....	22
Number of International Students.....	24
Campus Guide	25

**Official Mascot Character
“SATT SUN”**



The mascot character was selected by the students through voting. The design was inspired by the hope that the students will be as active as the Sakurajima volcano and will develop their talents like the great men of Satsuma did in the past.

MESSAGE FROM THE PRESIDENT

Kagoshima University has a long history and rich tradition in education. The university's origins can be traced back to the Hangaku Zoshikan School, which was established in 1773 and was run by the feudal domain. After the merger of several higher education institutions, including the Seventh Higher School established during the Meiji period (1868-1912), Kagoshima University inherited this educational tradition and was newly established in 1949 as a national university. Since then, Kagoshima University has been committed to comprehensively empower its students to positively contribute towards the future of our community and global society.

Kagoshima has a storied history of leaders who promoted the transformation and modernization of this country. In the spirit of these forefathers, this university is embodied by the core values of societal development, academic diversity, and the essence of self-sufficiency & enterprise. Through our educational programs, we aim to instill these same values within our students, and guide them in their growth as productive members of our local and global community. In addition to the advanced skills and knowledge necessary for success in contemporary society, students will gain compassion and understanding for those around them in their daily life.

Over the years, Kagoshima University has developed into one of the leading comprehensive universities in Japan, comprised of nine faculties and nine graduate schools, with approximately 9,000 undergraduates and 1,600 graduate students. In our continued pursuit of individual spirit of enterprise, this university has developed and supported a number of programs such as financial support for overseas educational programs, volunteer opportunities, projects addressing social challenges, a scholarship system and student awards program.

Kagoshima University has partnerships with 167 institutions in 40 countries and regions, and has approximately 400 international students. We also encourage developing and supporting international students by providing dormitories (available to both foreign and Japanese students), assistance for living in Japan and studying at Kagoshima University, Japanese language & Culture Classes for international students and so on.

Here at Kagoshima University, we also strive to engage in diverse and cutting-edge research. We encourage academic research pursuits in infection control, biological diversity, astronomy and space science, and intractable cancer in order to promote our goals for innovation and solutions for community challenges. Additionally, we have pursued many interdisciplinary research opportunities, so that we may provide solutions to local issues regarding the islands and environment. As “the center of intelligence” in the community, Kagoshima University also promotes the development of quality lifelong learning, cultivation of human resources, joint research projects with the local community, and industry-university-government collaboration.

Our university is located in vibrant Kagoshima, considered as a significant gateway into the rest of Japan. We are surrounded by a diverse selection of natural environments, including volcanic mountains, blue seas, and beautiful islands (such as Yakushima, which has been identified as a world heritage site). As for the campus itself, it is situated in the center of the city, and provides on-campus facilities such as libraries, museums, botanical gardens, and research farms for public use.

I want to personally welcome you to Kagoshima University, and invite you to explore the diverse and unique educational experience we have to offer.



SANO Akira
President

A handwritten signature in black ink, reading "Akira Sano". The signature is fluid and stylized, with the first name "Akira" and the last name "Sano" clearly distinguishable.

SANO Akira
President

University Calendar

Academic Year

4/1 - 3/31 (April 1 - March 31)

Excluding Saturdays, Sundays and National Holidays

First Semester

4/1 - 9/30

(April 1 - September 30)

Spring Vacation

4/1 - 4/10

(April 1 - April 10)

Summer Vacation

8/1 - 9/30

(August 1 - September 30)

Second Semester

10/1 - 3/31

(October 1 - March 31)

Anniversary of University Establishment

11/15

(November 15)

Winter Vacation

12/25 - 1/8

(December 25 - January 8)

Facts and Figures

As of May 1, 2023

● Undergraduate Faculties.....	9	● Total Student Body ..	10,144
● Graduate Schools	9	○ Undergraduates ..	8,574
● Institute for Education and Research	6	○ Master	963
(including 11 education and research centers)		○ Doctoral	607
● Joint-Use Facilities	10	○ Foreign Students ...	368
● Faculty Staff	1,182		
● Administrative and Technical Staff ..	1,593		

Kagoshima University Fundamental Values

Kagoshima University is located on the southernmost main island of the Japanese archipelago. Two defining features of the geography of the area are its openness to the Asian region and its natural environment consisting of the sea, volcanoes, and islands. Our unique initiatives will be based not only on such geographical features but also on our inherited tradition of education and spirit. It was immersion in the unique education and spirit of our region that motivated local predecessors to support Japan's Meiji Era modernization. We aim to contribute to local, national, and international communities and to be a comprehensive university with an enterprising spirit of which all members of the university, graduates, and the local community can be proud.

As regards the fourth mid-term objectives and the planning period, we will continue to strengthen our functionality as a central hub for revitalization of the southern Kyushu and Nansei Islands regions while working toward the realization of a sustainable society. From the southern Kyushu region to the world, we wish to enhance flourishing through the fostering of human resources an enterprising spirit, a global perspective and an eagerness and initiative to take on difficult challenges. We will also work on the following fundamental objectives to enhance the university's value as a 'glocal' education and research hub.

Reforming Education to Develop 'Glocally-Minded' Human Resources

We will further internationalize the education we provide. This will be done by assuring its quality that reaches and maintains international standards and by utilizing various benefits from educational regulations and entrance examination systems. We will also facilitate expansion of collaborative learning with the local community and promote experience-based education and thereby making the most of the characteristics of the region. Our hope is, through these projects, to develop human resources who can play an active role in the community with a global perspective in mind. Additionally, we aim to produce human resources with an enterprising spirit. Measures to achieve this goal include building a flexible educational system that considers rapid changes in society while using the strengths of a comprehensive university that incorporates interdisciplinary studies from the arts and sciences. We will also work on educational reforms to expand student support.

Promotion of Academic Research That Utilize the Strengths and Uniqueness of the University

We will work on further developing research fields that take advantage of the university's strengths and regional advantages. Included are food and safety, advanced infection control, biodiversity, space and astronomy, and islands and the environment. Furthermore, we will utilize the various funds and grants available to us to enhance the support system for young researchers, basic research, and the arts and social sciences fields, which often struggle to retain competitive funding. We will also promote advanced interdisciplinary research aimed at creation of innovation.

Promoting Social Contribution and Industry–Academia Collaboration to Address Regional Issues

In collaboration with the local community and private sectors, we will enhance recurrent education programs that address local issues, engage in diverse activities to contribute to volcanic disaster countermeasures and other disaster prevention. We intend to work toward mitigation of problems in the region and address issues local private sector and local governments face. We will further support innovations within the region by promoting adaptation and implementation of research results in the real world. In addition, we will strengthen the hub functionality we have inherited. These include promotion of education, research, and activities contributing to society. This will be done based on our unique programs focused on the Pacific islands and the environmental studies of the region as a whole.

Providing High-Quality Medical Care to the Community

We will pursue our cutting-edge basic research and transitional research in order to provide advanced medical care to the local community. We will also provide practical training adapted to the remote islands and rural areas in our region with the aim of developing the next generation of local health care workers.

Managing and Improving Organization Based on Self-Analysis

Under the leadership of the President, we will promote governance reform of the university. This will entail enhancement of the IR system and audit function, conducting self-analysis and utilizing the evaluation results for reform projects to effectively improve the organization, promote cooperation with other institutions, and make university management efficient and transparent.

Background

In 2007, Kagoshima University established a University Charter based on its basic philosophy of ‘enterprising spirit’, ‘gumption’ or ‘challenging mindset’ and laid out what Kagoshima University should do specifically under the philosophy. In the Charter, internationalization of Kagoshima University is defined as an effort of ‘deepening ties with Asia-Pacific countries; promoting two-way exchange of researchers and students; cooperation in international research and education; and contributing to the welfare of humanity, maintenance of world peace and conservation of the global environment’. To put this plan into practice, specific measures have been implemented. One of the basic goals during the 2nd mid-term objectives planning period starting in 2010 was ‘development of human resources who will contribute to the solution of international problems and who are able to make a difference in the age of globalization’. During the 3rd mid-term objectives planning period starting in 2016, ‘furthering the effort to develop human resources locally who will have a global perspective’ was one of the basic goals.

Basic Policy

(1) Establishment and enhancement of an educational system/educational environment conducive to the development of human resources who will have a global perspective

In order to internationalize Kagoshima University, it is necessary to internationalize the content of education offered to students. Therefore, we will further internationalize our educational system and environment. For Japanese students, we will provide an educational system and environment in which students may both spontaneously develop an interest in international affairs and different cultures of the world and use English and other foreign languages to grow into human resources with high skills in bidirectional communication. For non-Japanese students, we will build and offer a flexible education system so that they will be able to achieve their individual purposes of studying at Kagoshima University.

(2) Proactive internationalization of core research to turn Kagoshima University into a center of excellence for international education and research

Kagoshima University will promote world-class research efforts in which our strengths are brought into full play and accelerate academic exchange with overseas research institutions to recast the university as a center of excellence for international education and research. We will also enter into academic exchange agreements to accept more students from overseas academic institutions and send our high-performing undergraduate and graduate students to foreign academic institutions to develop human resources who will someday make a difference in the world.

(3) Development of high-quality human resources/organizations necessary to reinforce the internationalization of Kagoshima University

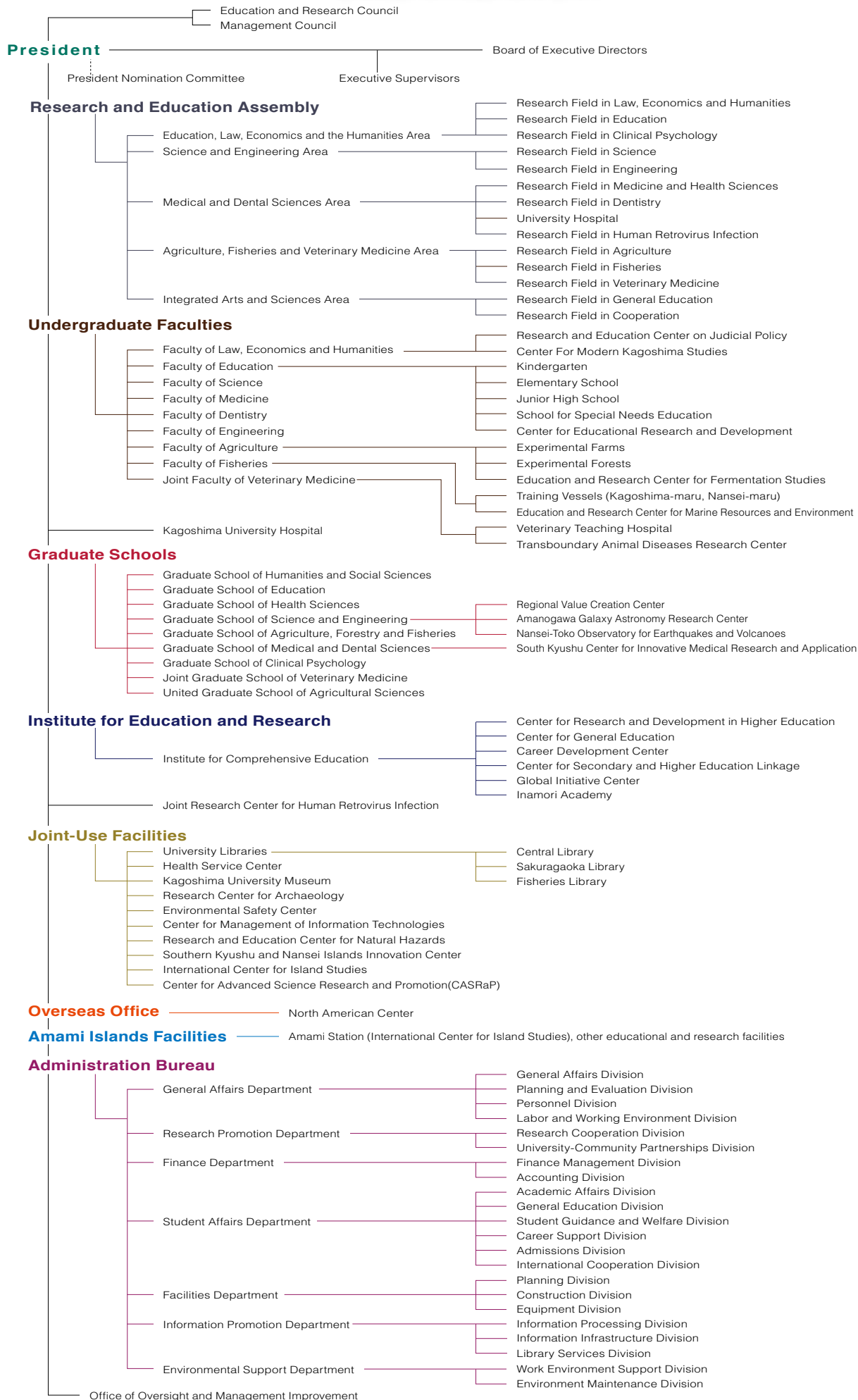
When a university internationalizes itself, it must make efforts across a wide spectrum of areas simultaneously, including education, research, social contribution, and control and management, and, in doing so, a flexible approach is often called for. In addition, faculty and university staff involved in international projects are required to have a certain level of language skills, and that is why organizations in charge of international projects are generally formed and operated independently from ordinary faculty and administrative organizations. However, it is necessary to make it understood across the university that human resources tasked with internationalization are not only such 'special staff' but also the whole faculty and staff of the university. At the same time, it is important to develop high-quality human resources and organizations within the university.

(4) Flexible and adequately focused budgeting and effective use of the budget on international projects

A substantial budget is required to carry out internationalization projects, and the university budget is too strained. To solve this problem, the university will submit, as part of its reform plan, an estimated budget necessary to implement internationalization projects and aggressively seek external funds. The university will also regularly evaluate the content and outcome of each project and reflect the results on the projects and budgets of the next year onward. Such evaluation will make it possible to formulate a budget flexibly with a clear focus and utilize it effectively on projects.



ORGANIZATION



STRATEGIC STUDY FIELDS

The research policy of Kagoshima University promotes collaboration and expansion in order to meet regional demands. To the south of Kagoshima are the Nansei Islands, stretching over 600 km of sea and including the famous Yakushima island (a UNESCO World Heritage Site) and the biologically diverse Amami Islands. Additionally, the prefecture has a rich natural environment that includes active volcanoes, such as Mt. Sakurajima and the Kirishima Mountains. Kagoshima University develops cutting-edge research in order to utilize these regional features and solve challenges in revitalizing the local communities. Cross-sectional and interdisciplinary research projects have been conducted in the following fields:

Research for Solving Regional Social Issues

Islands

Kagoshima University aims to contribute to the development of the communities and their globalization, their industrial development, the enhancement of the medical welfare, environmental protection and the betterment of the educational, cultural and informational environment in the Southern area of Kyushu and the Asia-Pacific region.

Environment

Kagoshima University conducts the Kagoshima Environment Project, which tackles the environmental issues within the community, and the Biological Diversity Project, which conducts university level research regarding biological diversity in the area of Yakushima island (registered as a World Natural Heritage Site) and supports the efforts to designate the Amami islands as World Natural Heritage as well.

Food and Health

Kagoshima University promotes scientific research on the health properties of local agricultural and fishery products and clarifying their effects on lifestyle-related diseases and senility syndrome. In addition, this project aims to develop dietary education and the production and distribution systems which enable us to guarantee food safety as well as to build a sustainable and recycling-based farming and fishing villages which are able to cope with the current problems.

Water

Kagoshima University conducts research regarding water-related issues particular to Kagoshima, such as water-use and water resources development/preservation, the flow of water in volcanic areas, floods and landslides caused by heavy rain and water pollution in the Southern Kyushu area.

Energy

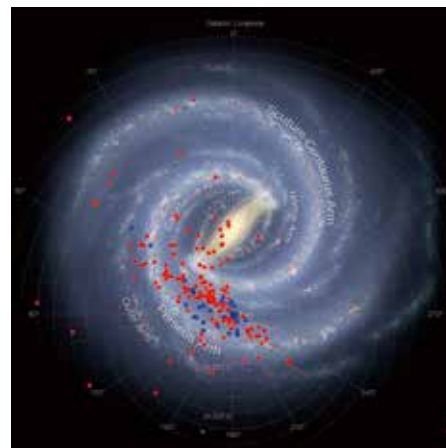
Kagoshima University aims to aid in the development of renewable energy, such as biomass, solar and ocean energy, in addition to developing solutions regarding local revitalization, environment conservation and collaboration between agriculture and industry by establishing systems to distribute and utilize energy from renewable sources.

Volcano & Earthquake Disaster Prevention

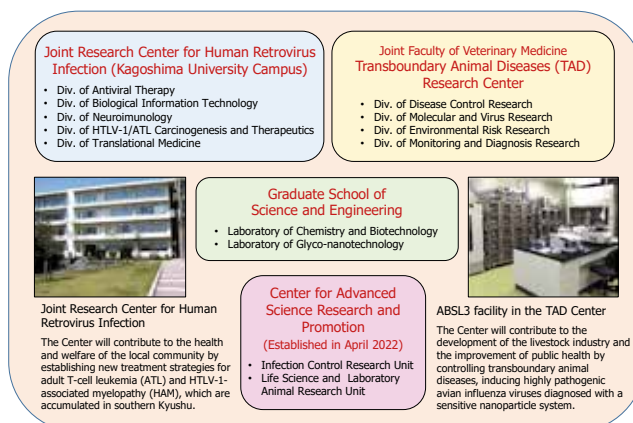
Kagoshima University endeavors to strengthen regional disaster prevention efforts in the Southern Kyushu and the Nansei Islands area through working with the regional community in addressing challenges such as factual investigation, prediction, education and emergency measures for disaster prevention and post-disaster recovery and reconstruction.

International-Standard Advanced Research

Kagoshima University is involved in international-standard advanced research for infection control, biological diversity, experimental animal models, the Milky Way Galaxy, and intractable cancer.

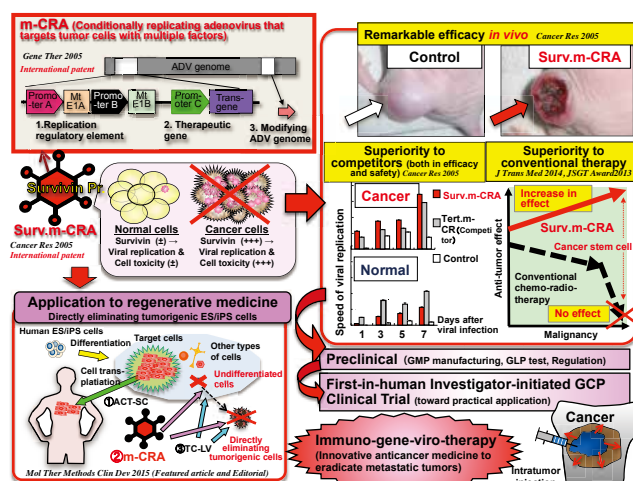


▲ A face-on view of the Milky Way Galaxy. (The background is an artistic image released from NASA.)
The spots are object locations measured with VERA (blue) and the university's 1m Infrared telescope (red).



Advanced Research on Infection Control (Concept)

The study group is aiming at establishing defense systems against menacing infectious pathogens in the Kagoshima area, such as HTLV-1 and avian influenza virus.



▲ Development of original gene-viro-therapy as an innovative therapy for intractable cancers toward clinical and practical application

COURSES OFFERED BY KAGOSHIMA UNIVERSITY

Faculty	Department, Sub-Divisions and Courses	Degree	Starting Term	Course Duration (year)
Faculty of Law, Economics and Humanities	Law, Economics and Sociology			
	Law	B	Apr	4
	Community Studies	B	Apr	4
	Economics	B	Apr	4
	Humanities			
	Area and Cultural Studies	B	Apr	4
Graduate School of Humanities and Social Sciences	Psychology	B	Apr	4
	Law	M	Apr, Oct [※]	2
	Economic and Social Systems	M	Apr, Oct [※]	2
	Humanistic-Environmental Cultural Sciences	M	Apr, Oct [※]	2
	International Cultural Sciences	M	Apr, Oct [※]	2
Graduate School of Clinical Psychology	Social Sciences	D	Apr, Oct [※]	3
	Master of Clinical Psychology	P	Apr	2
Faculty of Education	Teacher Education Course			
	School Education	B	Apr	4
	Psychological Science Education	B	Apr	4
	Japanese Education	B	Apr	4
	Social Science Education	B	Apr	4
	Mathematics Education	B	Apr	4
	Science Education	B	Apr	4
	Music Education	B	Apr	4
	Art Education	B	Apr	4
	Health and Physical Education	B	Apr	4
	Technology Education	B	Apr	4
	Domestic Science Education	B	Apr	4
	English Education	B	Apr	4
	Education for Children with Special Needs	B	Apr	4
Graduate School of Education	Education Practice Research Course	M	Apr	2
	Professional Development Program for School Teachers	P	Apr	2
Faculty of Science	Department of Science			
	Mathematics and Informatics Program	B	Apr	4
	Physics and Astronomy Program	B	Apr	4
	Chemistry Program	B	Apr	4
	Biology Program	B	Apr	4
	Earth Science Program	B	Apr	4
Faculty of Engineering	Department of Advanced Engineering			
	Mechanical Engineering Program	B	Apr	4
	Electrical and Electronics Engineering Program	B	Apr	4
	Ocean Civil Engineering Program	B	Apr	4
	Chemical Engineering Program	B	Apr	4
	Chemistry and Biotechnology Program	B	Apr	4
	Information Science and Biomedical Engineering Program	B	Apr	4
	Department of Architecture and Architectural Engineering			
Graduate School of Science and Engineering	Architecture and Architectural Engineering Program	B	Apr	4
	Department of Science			
	Mathematics and Informatics Program	M	Apr	2
	Physics and Astronomy Program	M	Apr	2
	Chemistry Program	M	Apr	2
	Biology Program	M	Apr	2
	Earth Science Program	M	Apr	2
	Department of Engineering			
	Mechanical Engineering Program	M	Apr	2
	Electrical and Electronics Engineering Program	M	Apr	2
	Ocean Civil Engineering Program	M	Apr	2
	Chemical Engineering Program	M	Apr	2
	Chemistry and Biotechnology Program	M	Apr, Oct	2
	Information Science and Biomedical Engineering Program	M	Apr	2
	Architecture and Architectural Engineering Program	M	Apr, Oct	2
	Interdisciplinary Department of Science and Engineering	D	Apr, Oct	3
Faculty of Medicine	School of Medicine	B	Apr	6
	School of Health Sciences			
	Department of Nursing	B	Apr	4
	Department of Physical Therapy	B	Apr	4
	Department of Occupational Therapy	B	Apr	4
Faculty of Dentistry	School of Dentistry	B	Apr	6

※ October Admission is available only for students from designated partnership universities.

Faculty	Department, Sub-Divisions and Courses	Degree	Starting Term	Course Duration (year)
Graduate School of Health Sciences	Division of Nursing	M	Apr	2
	Division of Health Sciences	M	Apr	2
	Health and Nursing	D	Apr	3
	Neuromotor Science	D	Apr	3
	Clinical Neuropsychiatry	D	Apr	3
Graduate School of Medical and Dental Sciences	Health Research	D	Apr, Oct	4
	Advanced Therapeutics	D	Apr, Oct	4
	Medical Science			
	Frontier Bioscience Course	M	Apr, Oct	2
	Advanced Medical Expert Course	M	Apr, Oct	2
	Global Master Course	M	Apr, Oct	2
Faculty of Agriculture	Agricultural Sciences and Natural Resources			
	Applied Plant Science	B	Apr	4
	Animal Science	B	Apr	4
	Food and Agricultural Economics	B	Apr	4
	Food Science and Biotechnology			
	Food Chemistry and Biofunction	B	Apr	4
	Food Safety and Bio-Environmental Science	B	Apr	4
	Fermentation Technology and Microbial Science	B	Apr	4
	Environmental Sciences and Technology			
	Forest Science	B	Apr	4
	Environmental and Bioresource Engineering	B	Apr	4
	Special Course in International Food and Resource Sciences			
	Agriculture-based sub-course	B	Apr	4
	Special Course in International Food and Resource Sciences	B	Apr	4
Faculty of Fisheries	Fisheries Science and Technology			
	Aquatic Sciences	B	Apr	4
	Fisheries Resource Sciences	B	Apr	4
	Food and Life Sciences	B	Apr	4
	Fisheries Economics	B	Apr	4
	Aquatic Environment Conservation Sciences	B	Apr	4
Graduate School of Agriculture, Forestry and Fisheries	Agriculture, Natural Resources and Forestry	M	Apr	2
	Food Innovation Science	M	Apr	2
	Field Environment Science	M	Apr	2
	Fisheries Resource Science	M	Apr	2
United Graduate School of Agricultural Sciences	Science of Bioresource Production	D	Apr, Oct	3
	Biological Science and Technology	D	Apr, Oct	3
	Resource and Environmental Science of Agriculture, Forestry and Fisheries	D	Apr, Oct	3
Joint Faculty of Veterinary Medicine	Veterinary Medicine			
	Basic Veterinary Science	B	Apr	6
	Pathogenetic and Preventive Veterinary Science	B	Apr	6
	Clinical Veterinary Science	B	Apr	6
Joint Graduate School of Veterinary Medicine	Basic Veterinary Science	D	Apr, Oct	4
	Pathogenetic and Preventive Veterinary Science	D	Apr, Oct	4
	Clinical Veterinary Science	D	Apr, Oct	4

B : Bachelor's Degree M : Master's Degree D : Doctoral Degree P : Professional Degree

UNDERGRADUATE FACULTIES

Faculty of Law, Economics and Humanities

<https://kadai-houbun.jp/en/>

The multi-disciplined Faculty of Law, Economics and Humanities aims to produce graduates capable of dealing with society's problems using an in-depth knowledge of social and cultural issues. The Department of Law, Economics and Sociology is comprised of three courses. The course of Law has a curriculum to foster versatile legal thinking and planning skills. The Course of Community Studies has a curriculum to find problems in community and to promote cooperating formation for solving them through residents' participation. The Course of Economics has a curriculum to foster policy planning ability and management capability for developing regional economy. Finally, the Department of Humanities is comprised of two courses, Psychology and Area and Cultural Studies, which aim to provide students with the knowledge and skills to understand the world we live in and help shape its future.

Faculty of Science

<https://sci-kagoshima-univ.jp/en/>

The Faculty of Science originated from Zoshikan middle school founded in 1884. It was reformed as the Seventh Higher School, Zoshikan, in 1901 and is the direct origin of the faculty. The present system has been established since 1965 and become an education and research center on fundamental natural sciences. It is one of the four faculties of science in Kyushu island. The faculty is currently composed of five programs: Mathematics and Informatics; Physics and Astronomy; Chemistry; Biology; and Earth Science. The educational aim of the faculty is understanding science beyond the knowledge and extending science concept and method to the human society. This faculty produces about 160 graduates every year, and they contribute to the society in various scientific fields.

Faculty of Dentistry

<https://w3.hal.kagoshima-u.ac.jp/en/>

The Faculty of Dentistry of Kagoshima University was founded in southern Kyushu, Japan in 1977. Since then, Kagoshima University has continued to serve beyond the local area and has played a role as a leading institution for global dental education, research, and oral health care. We provide a comprehensive education including dental, medical and other subjects all throughout the 6-year program so that students can continuously develop a well-rounded perspective rather than a narrow, dentistry-exclusive one. Furthermore, our students are given various opportunities to experience research projects, study abroad programs, as well as oral health care programs on remote islands. At the end of our program, our students are educated to be able to actively contribute to local and global oral health with their unique ideas in their future.

Faculty of Education

<https://www2-edu.edu.kagoshima-u.ac.jp/en/>

The Faculty of Education originated from a teacher training school founded in 1875. The present institution dates back to 1949 and was expanded in 1994 to include a graduate school. The curriculum stresses individual research and encourages the deepening of specialist knowledge through lectures, seminars, experiments, practical training, field work, the observation of child development, performance, and the practical training of physical education, arts and music. The faculty facilities are high quality, including such sports facilities as an athletics track, a multipurpose playing field, tennis courts, two gymnasiums, martial arts rooms, and a swimming pool. The faculty members are eager to educate and train the excellent teachers of the future.

Faculty of Medicine

<https://www.kufm.kagoshima-u.ac.jp/en/>

The Faculty of Medicine originated with a British-style medical school founded in 1869. Dr. William Willis, the first principal of that school, introduced western medicine to Kagoshima and trained many Japanese students. Today, the faculty is comprised of two schools, namely, the School of Medicine and the School of Health Sciences. The latter was established in 1998 with the aim of training medical technicians of the highest standard. The faculty cultivates highly qualified professionals and has made substantial contributions to the advancement of medical science and to the health and welfare of people across Japan. It aims to foster personnel who are highly studious, possess well-rounded character, contribute to the local community, and hold an international perspective on medicine and healthcare.



Faculty of Engineering

<https://www.eng.kagoshima-u.ac.jp/english/>

The Faculty of Engineering provides substantive knowledge and professional skills to each student deeply interested in engineering, manufacturing, or technological development. Students will acquire the ability to solve many problems in today's global society, using their knowledge and skills practically. The faculty has been promoting educational reform to meet international standards and has been cultivating talent among its students, so that they may play active roles in the betterment of the world.

The Faculty of Engineering is composed of two departments with seven educational programs that cover the main fields of manufacturing. The Faculty is committed to training professional engineers, leading in social reform, creating intellectual infrastructure, and developing innovative manufacturing.

Faculty of Agriculture

<https://www.agri.kagoshima-u.ac.jp/en/>

Faculty of Agriculture dates back over 110 years to 1909. Today, the faculty consists of three departments and a new special course: Agricultural Sciences and Natural Resources, Food Science and Biotechnology, Environmental Sciences and Technology and a special agricultural sub-course of International Food Resources Sciences. In addition, there are three research and educational units: Kagoshima University Experimental Farm, Experimental Forests and Education and Research Center for Fermentation Studies (ERCSF). The undergraduate course provides students with a wide-ranging basic education in agriculture, including field training, laboratory experiments and various research activities. For those who seek the degree of Master of Agriculture, a two-year graduate course is available in "Graduate School of Agriculture, Forestry and Fisheries."

Faculty of Fisheries

<https://www.fish.kagoshima-u.ac.jp/en/>

The Faculty of Fisheries is composed of five fields: Aquatic Sciences, Fisheries Resource Sciences, Food and Life Sciences, Fisheries Economics, and Aquatic Environment Conservation Sciences. The faculty has contributed to society considerably through its graduate production and applied research on issues ranging from the aquatic environment and resources to their industrial utilization and consumption. The faculty has focused on field-oriented education and research, as well as an agenda on sustainable development and rational utilization of fishery resources, conservation of aquatic environment and international contribution and engagement in local fisheries. Moving forward, the faculty hopes to maintain its status as a world-renowned fisheries education and research institution, encompassing the tropical and sub-tropical aquatic belt across the globe.

Joint Faculty of Veterinary Medicine

<http://www.vet.kagoshima-u.ac.jp/jfvm/eng/index.html>

Joint Faculty of Veterinary Medicine offers highly specialized lectures frequently delivered using a simultaneously streamed class system with Yamaguchi University, as well as hands-on training at small groups of students. The Faculty was fully accredited by the Japan University Accreditation Association (JUAA) for the national standards of veterinary education, and also by the European Committee of Veterinary Education following a site visit by the European Association of Establishments for Veterinary Education (EAEVE). Veterinary Teaching Hospital consists of three medical centers for small animal, large animal, and Equine. Experimental Animal Center is accredited by AAALAC International to implement humanitarian care and animal use programs. Transboundary Animal Diseases (TAD) Research Center has been established for the research of TAD pathogens and epidemics.



GRADUATE SCHOOLS



Graduate School of Humanities and Social Sciences

<https://gs.kadai-houbun.jp/en/>

The Graduate School of Humanities and Social Sciences offers four master's degree courses in Law, Economic and Social Systems, Humanistic-Environmental Cultural Sciences and International Cultural Sciences and a doctoral degree course in Social Sciences.

The school promotes a variety of research areas and has developed high quality postgraduate programs centered mainly on community-based subjects, which enhance students' practical expertise in their specialized fields. In order to meet the challenges of providing higher education that is accessible to mature students from the local community, classes are also offered in the evening to enable those with full-time jobs to enroll. Additionally, starting in 2024, an optional online teaching program will be available for students who have reasons not to commute to the university.



Graduate School of Health Sciences

<https://www.kufm.kagoshima-u.ac.jp/~g-health/en/>

The Graduate School of Health Sciences aims to develop professionals with highly advanced knowledge and skills in health sciences, and leading administrators who can carry out excellent educational and research activities. Additionally the school trains personnel who can both contribute to health care on remote islands and globally, and disseminate the results and data of educational research widely. In April 2003, a master's course was established, and in April 2005, a doctoral course was created. The department's educational goals are to develop high-quality educators and researchers to carry out original research and efficiently provide education to develop students' competencies. Moreover, the school focuses on the development of personnel who contribute to community health care in rural, island, and international settings.



Graduate School of Agriculture, Forestry and Fisheries

<https://ace1.agri.kagoshima-u.ac.jp/agrifish/en/>

From April fiscal year 2019, both the Faculty of Agriculture and the Faculty of Fisheries joined to establish the 'Graduate School of Agriculture, Forestry and Fisheries'. The purpose of research and education in this new Graduate School is to award degrees to students who have advanced expertise in plant production science, animal science, local business, food distribution, aquaculture, production activities relating to food innovation, food and health as well as those fields that are underlying such as local environmental characteristics, sub-tropicalization, forestry management, disaster prevention, fishery resources and local ecology. The purpose of this Graduate School is to create graduates with the ability to propose solutions to challenges; and the practical skills to execute these solutions, thus developing human resources who can contribute to the regional areas as well as to the rest of the world.



Graduate School of Education

<https://www2-edu.edu.kagoshima-u.ac.jp/teaching/>

From April 2021, we merged the existing master's course (Education Practice Research Course) into the professional degree course (Professional Development Program for School Teachers) and launched the three selectable research programs in the new degree course. These programs offer research programs for curriculum and instruction (Teaching and Learning), school study, and special needs education.

Our aim is to nurture pre-service and in-service teachers who are equipped with leadership and development skills, and who can become influential members in school development, tackling various educational issues in cooperation with families and the local community. Upon completion of the prescribed units, Master of Education will be awarded.

Furthermore, those teachers who already possess the first-grade teacher's license for elementary, junior high, senior high, and special needs school, will be able to acquire the specialized teacher's certificate.



Graduate School of Science and Engineering

<https://grad.eng.kagoshima-u.ac.jp/en/>

The Graduate School of Science and Engineering aims to produce professionals who dedicate themselves to scientific pursuits, uphold high ethical standards, and take on difficult challenges. Students are provided with an education that meets the changing needs of contemporary society in both content and application. The curriculum includes theories ranging from basic to applied science and engineering, and students are supported through advanced studies. The Graduate School of Science and Engineering develops students into engineers, researchers, and other professionals that will positively contribute to the future of society. Such professionals will be required to make ethical judgments on sensitive issues, to be knowledgeable about the nature of the world, and to be responsive to the advancement and diversification of the natural sciences.



Graduate School of Medical and Dental Sciences

<https://www2.kufm.kagoshima-u.ac.jp/en/>

The Graduate School of Medical and Dental Sciences aims to respond quickly to the many demands of society and to carry out high level education and research efficiently, while placing priority on medical ethics. The school strives to apply a flexible and wide-ranging scope to medical and dental research and to the development of treatments for the cure and prevention of human disorders. As central goals, this school hopes to foster leading researchers and educators in life science fields and create a center of education and research in medicine, dentistry, and life science with particular relevance to the local region. In addition to graduates in the fields of medicine or dentistry, the school welcomes graduates from a diverse range of disciplines.

Graduate School of Clinical Psychology

<https://cp.leh.kagoshima-u.ac.jp/en/>

This school was established in April 2007 as an independent graduate course offering a professional degree program that specializes in training clinical psychologists. We provide advanced professional education based on a curriculum of lectures, seminars and practical training to foster clinical psychologists and who can contribute to people's mental well-being. On-campus clinical psychology training takes place inside the annexed counseling room. Off-campus training takes place at four locations over a 2-year period, covering the educational, medical, welfare, and judicial areas. Fifteen students take a two-year course and obtain the degree of Master of Clinical Psychology. Graduates from this program enjoy a very high pass rate in the examination for clinical psychologists and easily find employment in Japan.

Joint Graduate School of Veterinary Medicine

<http://jgsvm.vet.kagoshima-u.ac.jp/eng/index.html>

Joint Graduate School of Veterinary Medicine was newly established at Kagoshima University in April, 2018. The doctoral program is operated by Joint Graduate School of Veterinary Medicine at Kagoshima University and Joint Graduate School of Veterinary Medicine at Yamaguchi University, building on the baccalaureate degree programs established collectively by Joint Faculty of Veterinary Medicine at Kagoshima University and Joint Faculty of Veterinary Medicine at Yamaguchi University. During the four-year course offered by this graduate school, students receive advanced postgraduate education corresponding to a variety of international demands.

United Graduate School of Agricultural Sciences

<https://homeugs.agri.kagoshima-u.ac.jp/en/>

The United Graduate School of Agricultural Sciences (UGSAS) at Kagoshima University was established in 1988. The UGSAS is composed of the master programs among three allied universities: Saga University, Kagoshima University and the University of the Ryukyus. The aim of UGSAS is for students to master advanced agricultural or fisheries sciences through course work and research involving regional or international issues. Our doctoral research activities focus on food production and environmental conservation based on advanced life science or marine science. Successful graduates of this program are awarded a Doctorate Degree of Philosophy.



INSTITUTE FOR EDUCATION AND RESEARCH

INSTITUTE FOR COMPREHENSIVE EDUCATION

● Center for Research and Development in Higher Education

<https://www.kagoshima-u.ac.jp/higheducenter/>

The Center for Research and Development in Higher Education undertakes research on higher education (including universities and other similar institutions) in Japan and overseas, and uses this research as a basis for surveys and investigations, based on accurate data, to develop an accurate picture of the current state of Kagoshima University.

● Center for General Education

<https://www.kagoshima-u.ac.jp/educenter/>

The Center for General Education, first established in October of 2003, has undergone restructuring as of April 2017. The overall purpose of the Center for General Education is to further the enhancement and development of education at Kagoshima University through university-wide liaison and coordination to design, formulate and implement planning for both general education and curatorial courses.

Since the early days of the 'Daishichikou school system' (circa 1901), Kagoshima University has had a long tradition of providing a unique academic experience, attuned to and innately connected to the Kagoshima region. In addition to this, our freshman program, based upon the tenet of contributing in an increasingly globalized society, places particular focus on global studies, and on fostering the student's ability to strive for a better society.

The cornerstone of our undergraduate education at Kagoshima is fostering graduates who will go on to positively contribute to civil society, both at home and abroad, based upon the principles of respect for truth and ethics, and to be well equipped to face whatever challenges might arise in the future.

● Career Development Center

<https://www.kagoshima-u.ac.jp/career/>

After a restructure of the Career Support Center, the Career Development Center, was established in April 2020. The center's purpose is to enhance career education across Kagoshima University and to raise awareness of career development amongst students from their first year, as well as assisting students and graduates in career planning and finding employment.

All the career building support programs, including internships, and services such as career counseling and advice on major choices offered by the center are designed to help students identify and develop their career goals throughout their university life.

● Center for Secondary and Higher Education Linkage

<https://www.kagoshima-u.ac.jp/linkage/>

The Center for Secondary and Higher Education Linkage was originally established as the Admission Center and was reorganized in April 2023.

It aims to play a central role in educational activities to ensure a smooth transition to study at the Kagoshima University, taking into account the diverse academic characteristics of incoming students. In addition, we will continue to improve our admission system through ongoing research and analysis of student learning outcomes by admission system.

● Global Initiative Center

<https://www.gic.kagoshima-u.ac.jp/>

The Global Initiative Center, established in April 2016, consists of the Planning and Network Division, the Study Abroad Division, and the International Student Division. It aims to promote the globalization of Kagoshima University in education and research. The Planning and Network Division promotes collaborative efforts in research and education with overseas universities and research institutions and provides information on our university internationally. The Study Abroad Division organizes P-SEG Interactive, an educational program that provides students with necessary skills and knowledge in global contexts and information on study abroad sessions. The International Student Division is responsible for the "Study Japan Program," offering Japanese language and cultural education, counseling for academic and non-academic affairs, and promoting exchange activities among international students, Japanese students, and the local society.

● Inamori Academy

<https://www.inamori.kagoshima-u.ac.jp/english.html>

The Inamori Academy is endowed by generous donations from Kyocera Corporation and its founder and Chairman Emeritus, alumnus Dr. INAMORI Kazuo. The academy was originally established in 2005 as the Inamori Academy of Management & Technology and expanded in 2008 to provide courses containing lectures on Dr. Inamori's works and philosophy to undergraduate students via general education. The central mission of the Inamori Academy is to develop leadership potentials and skills of university students, based on Inamori Philosophy, toward to 21st Century Citizenship and Spirit of Enterprise.

JOINT - USE FACILITIES

● University Library

<https://www.lib.kagoshima-u.ac.jp/en>



The University Library consists of three libraries: Central Library, Sakuragaoka Library (Medical Library), and Fisheries Library. The aim of the University Library is to provide academic materials and a range of services, including electronic information services, to assist university students, faculty, and staff with their studies, research, and teaching. Electronic information services can be used to locate books and journals in the collections and find information in a variety of databases throughout the campus network.

Central Library houses the Tamazato Bunko, a valuable collection of manuscripts and xylographic books from the pre-Meiji era that originally belonged to the Regent of Satsuma, SHIMADZU Hisamitsu.

● Health Service Center

<https://hsc.kuas.kagoshima-u.ac.jp/>



The Kagoshima University Health Service Center is staffed with medical doctors, nurses, counselors, and social workers for the physical, mental, and educational well-being of Kagoshima University community.

It offers regular general check-ups, health counseling, advice on health maintenance, and first aid treatment. Provided that they have a valid and accepted university ID, the Health Service Center's services are usually free of charge.

● Kagoshima University Museum

<https://www.museum.kagoshima-u.ac.jp/>



The Kagoshima University Museum (KAUM) was established in 2001 as the seventh national university museum in Japan. For the last half-century, Kagoshima University researchers have collected samples and artifacts related to humanities, social sciences, and natural sciences. The aims of KAUM are to preserve these important objects for use in education and research, and to make a new collection from fields. KAUM also introduces the research activities of Kagoshima University through exhibitions, public lectures and publications. The Exhibition Room is open to the public as a permanent display. It consists of four sections: 1) archaeological sites in Kagoshima University, 2) education and research history of Kagoshima University, 3) mineral resources of the earth, and 4) marine fossils from Kagoshima.

● Research Center for Archaeology

<https://www.kagoshima-u.ac.jp/maibun/>



There are archaeological sites on the campuses of Kagoshima University. These sites are located at the Korimoto campus, the Sakuragaoka campus, the Toso residence hall and the Ibusuki botanical experiment station. The Research Center for Archaeology conducts rescue excavation at these sites. Research results are published and accessible to the public.

● Environmental Safety Center

<https://www.kagoshima-u.ac.jp/haieki>



Universities are institutions where advanced and specialized research and educational activities are carried out and contribute to the development of society through new discoveries, beneficial results, and development of new talent. However, at the same time, these research activities generate various kinds of waste, including highly toxic and dangerous ones. All university students, researchers, and staff are required to treat these wastes safely and properly. Nevertheless, when an accident occurs involving hazardous wastes, it is necessary to respond quickly and appropriately, investigate the cause, and make great efforts to prevent any reoccurrence.

The Environmental Safety Center contributes to accident prevention by preparing a system for the safe and appropriate management of the hazardous wastes. By providing safety education, guidance, and advice to students and faculty members, the center also contributes to the development of human resources with a high level of specialized training and safety awareness, thus ensuring a safe environment not only for the university but also for society.

● Center for Management of Information Technologies

<https://www.cc.kagoshima-u.ac.jp/>



The Center for Management of Information Technologies (restructured from the Computing and Communications Center in April 2022), promotes digital transformation (DX) at Kagoshima University. The center actively supports the local community with DX and reinforces the development of the university's communication infrastructure.

The center provides computer rooms installed with 190 computers for classes and self-study. Those who possess a Kagoshima University ID can use the computers throughout the academic year (Monday through Friday from 8:30 to 21:00, Saturday and Sunday from 13:00 to 18:00).

The center is accredited by the Information Security Management System JIS Q 27001(ISO/IEC27001) and provides highly secure information services based on international information security standards. In addition, the Kagoshima University Computer Security Incident Response Team (KU-CSIRT) was established in 2016 to bolster security countermeasures and strategies for the continuation of projects; raise awareness about information security, and develop a system for a rapid response to emergency security incidents.

● Research and Education Center for Natural Hazards

<https://bousai.kagoshima-u.ac.jp/>



Established in June 2011, The Research and Education Center for Natural Hazards investigates the mechanisms and causes of natural disasters and examines measures for disaster prevention in Southern Kyushu and the Nanseishoto island chain. Within the center there are three divisions: 1) The Research Division conducts research on natural hazards, floods, landslides, volcanic eruptions, earthquakes, tsunamis, radiation, disaster management, emergency evacuations, mental health, medical care, and reconstruction. 2) The Education Division plans and manages disaster prevention lectures and training for general and specialized course students, as well as holding an open seminar and symposium on natural disaster prevention. In addition, the center supports the training of human resources who will serve as the core of regional disaster prevention. 3) The Regional Cooperation Division provides proposals and cooperates with local government, communities, and media to prevent and mitigate disasters.

● Southern Kyushu and Nansei Islands Innovation Center

<https://www.krcc.kagoshima-u.ac.jp/>



The Southern Kyushu and Nansei Islands Innovation Center aims to realize the goal of having Kagoshima University function as a “Core Base for Regional Revitalization for the Southern Kyushu and Nansei Islands Region” as stated in the university’s Fourth Medium-term Plan.

The Center is taking steps to help generate regional innovation through collaborative research and commissioned research with local governments and local businesses on addressing issues such as disaster preparedness, healthcare, tourism, energy, manufacturing, agriculture, forestry and fisheries, aquaculture, etc. The Center comprises two units; the Research and Innovation Unit and the Intellectual Property and Risk Management Unit.

The Research and Innovation Unit is staffed by a University Research Administrator (a specialist engaged in support services for research activities and management of researchers) and an Industry-University Collaboration Coordinator, and supports research activities, matches university research activity with social needs, promotes technology transfer for incubation of entrepreneurial business ventures based on academic research, and entrepreneurship education.

The Intellectual Property and Risk Management Unit is staffed by patent attorneys. This unit promotes and manages the discovery, protection, maintenance, and utilization of intellectual property generated as a result of the university's research activities.

● International Center for Island Studies

<https://cpi.kagoshima-u.ac.jp/>



The International Center for Island Studies promotes interdisciplinary research on island related issues in the Asia-Pacific region. The center has been supported by researchers from Kagoshima University as well as other domestic and overseas universities/institutions. Activities conducted by the center are pursued primarily through three interrelated projects: a) natural and social environments of islands and their sustainability; b) island development issues relating to medical care, information provision, and social change; c) self-sustaining development in island communities through technical progress in fields such as agriculture, fisheries, and education. The results of studies have enhanced comprehensive understanding of island environments and the welfare of island communities.

The center has a station in Amami-Oshima Island, which supports research as well as educational activities on the Amami Islands. The station also aims to advance regional goals.

● Center for Advanced Science Research and Promotion(CASRaP)

<https://gene4.knit.kagoshima-u.ac.jp/casrap/>



The Center for Advanced Science Research and Promotion (CASRaP) was established in April 2022 as a result of reorganizing the former Research Support Center and the former Center for Advanced Biomedical Science and Swine Research and addition of a new organization for promoting advanced infection control. CASRaP is organized into three research units with seven divisions spread throughout the units: (1) Infection Control Research Unit (Division of Infection Control Research); (2) Life Science and Laboratory Animal Research Unit (Division of Laboratory Animal Resources and Research, Division of Experimental Large Animal Research, Division of Advanced Biomedical Science and Swine Research); and (3) Research Support Unit (Division of Gene Research, Division of Instrumental Analysis, Division of Isotope Science). CASRaP aims to promote and support research and educational activities in all areas of the natural sciences, especially life science, environmental science, and material science.

FACILITIES

Kagoshima University International Residence Hall

Kagoshima University International Residence Hall provides accommodations for overseas students and academics engaged in study or research at Kagoshima University. It is also intended as a setting for international cultural exchange.

With a fine view to the east of the Sakurajima volcano, the hall is situated in a quiet residential district adjacent to the Faculty of Fisheries. Public transport is within easy reach, with the nearest streetcar stop five minutes away on foot and the nearest bus stop just a minute away. It is a 15-minute walk to the Korimoto campus.



Kagoshima University International Lodge

Kagoshima University International Lodge was constructed in December 2003 in the Shimo-arata district, adjacent to the Faculty of Fisheries. It was a donation for Kagoshima University's 50th Anniversary, for the use of visiting overseas scholars and guests. It is a two-story building, on a steel framework, and consists of two types of 16 single rooms for long and short term stay. Its total floor area is 502m² and each room is equipped with a TV, refrigerator, and other necessary furniture.



Inamori Hall

Dr. INAMORI Kazuo, a former Bachelor of Engineering graduate and the first honorary doctoral recipient of Kagoshima University, donated Inamori Hall to this university in 2019 as a place where one can learn from his philosophy and be a catalyst for creative thinking, thereby encouraging talented people to take an active role in the international domain as well as in strengthening regional and industrial cooperation.

There is an IT Plaza with power outlets and Wi-Fi connectivity, a food court and a restaurant available for students and staff to use.

Also, within the building, the "Inamori Library" and the "Kyoto Prize Library" installation have been added to introduce and expose visitors to the history and philosophy of Dr. INAMORI Kazuo.



Inamori Auditorium

The Inamori Auditorium was constructed in 1994 with a special donation by alumnus Dr. INAMORI Kazuo and was designed by renowned architect Tadao Ando. Its large lecture hall, named after Dr. Inamori's parents, Kimi and Kesa, is widely used for university lectures and events.



Veterinary Teaching Hospital <http://www.vet.kagoshima-u.ac.jp/KUVTH/>

As an educational facility that is affiliated with the Kagoshima University Joint Faculty of Veterinary Medicine, the Veterinary Teaching Hospital is dedicated to educating future veterinarians. By serving as a key regional animal treatment facility that conducts research into animal diagnosis and treatment, it is also open to the surrounding community. Currently, the hospital treats farm and companion animals, with services for the former including an artificial insemination clinic for livestock. Treatment of companion animals is offered by departments of general practice, internal medicine, infectious disease, oncology, neurology, urology, soft tissue surgery, orthopedics, and genetic examination. The facility also provides a full range of medical care for horses through the Equine Medical Center, which opened in 2008. In addition, renewal Small Animal Medical Center and Large Animal Medical Center were opened in 2017. As part of its mission, the hospital also provides opportunities for veterinarians to study clinical veterinary medicine through the examination of animals.



Kagoshima University Hospital <https://www.hosp.kagoshima-u.ac.jp/>

The Kagoshima University Hospital consists of 17 clinical centers including the Cardiovascular Center, the Digestive Disease Center, the Neurology Center, the Respiratory and Stress Care Center in addition to 44 central clinical facilities. Furthermore, it includes the Division of Pharmacy, Nursing and Clinical Technology, and the Administration Office.

The redevelopment project of our hospital started in 2007. Two years later, the central clinical building was built. It includes the Clinical Laboratory and Medical Material Management Center on the second floor; Intensive Care Units with 14 isolated rooms on the third floor; and the Surgical Center with 16 operating rooms on the fourth floor. In 2013, the nine-story ward building (building C) was completed. It is equipped with a clinical training center on the eighth floor, as well as a heliport on the roof.

In 2018, building B was built. It consists of one floor of the basement and 9 stories above the ground. It houses radiology equipment such as CT, MR, PET, RI; an angiography room, a laboratory area with EEG and ultrasound, a rehabilitation room, a perinatal maternal center with NICU and delivery room. Building A is currently under construction and will be completed in 2024.



Center For Modern Kagoshima Studies

<https://kadai-kingendai.jp/>

Affiliated with Kagoshima University's Faculty of Law, Economics and Humanities, the center was established in October 2022. Its primary goal is to gather materials related to the history, culture and nature of Kagoshima from the modern era to the present, digitize them, and create a database for education and research purposes. The center also hosts events such as symposiums and workshops, disseminating its findings to the local and global community. Additionally, it is involved in addressing various regional issues through collaborations such as with local governments, companies, schools, and citizens, not just university researchers. Through these activities, the center is part of Kagoshima University's contribution to society.



Core Educational Facility for Shared Use: T/V Kagoshima-maru, Training Vessel of Faculty of Fisheries

The training vessel, Kagoshima-maru (IV) was completed on March 30, 2012 and put into commission in the 2012 academic year. T/V Kagoshima-maru is one of the latest academic vessels, which has unique high-maneuvrability, e.g. diagonal transfer and pin-point turn around with no forward motion. It enables experiments and oceanographic surveys which used to be difficult on rough seas, and enriches new education and research, due to the installation of the latest observation devices onboard. This vessel is the successor of the last T/V Kagoshima-maru (III) which had been authorized as the first 'Core Educational Facility for Sharing Use (CEFSU)' by the Minister of Education, Culture, Sports Science and Technology, and is designated as 'CEFSU for on-board education on tropical and sub-tropical waters.' This authorisation reflects the excellently accumulated achievements by T/V Kagoshima-maru and Kagoshima University, which have been active around the concerned region for many years. Because of the designation, T/V Kagoshima-maru is now responsible to educate students of not only Kagoshima University but also other institutions. Students of other institutions have become able to receive high quality on-board training and attain credits. T/V Kagoshima-maru is expected to play a role as the center of education in the seas, including Southeast Asian and Pacific waters.



Core Educational Facility for Shared Use: Takakuma Experimental Forest

In 1909, the Takakuma University Forest (Tarumizu City) was established in the Kagoshima College of Agriculture and Forestry, a predecessor of Kagoshima University, as a place for forestry education and research. The total area is 3,061ha which is the equivalent to about 19% of the area of Tarumizu City and accounts for 84% of the land property owned by Kagoshima University. The planted trees originate from the 100 year old endeavors of our predecessors. At present, the planted trees (consisting of Japanese Cedar and Japanese Cypress originally derived from 'Yakusugi') occupy approximately one-third of Takakuma Experimental Forest, while the remainder is covered in the native lush evergreen trees common to southern Kyushu.

The forest is used mainly for students taking courses in forest science and courses for practical training and research. Since the year 2000, the forest has also been used for courses in general education (such as non-agriculture and forestry related university courses) by Kagoshima University and also by other universities. By providing education programs for young students and forest technician training for adults, the forest has made a significant regional contribution as well as leveraging other uses for the forest.

Based on these previous accomplishments, the Ministry of Education, Culture, Sports, Science and Technology has recognized the Takakuma Experimental Forest as a Joint Usage Educational Center since 2014, in order to further develop effective practical uses of the forest. Between 2014-2018, a total of 3,011 people from 42 universities have visited the forest.

From 2019, the second term of the joint usage base started as "A learning forest base that connects nature, living and forestry in Kagoshima." It is currently used by many universities in various fields such as forestry, environmental education, flora, and fauna, disaster prevention, and local communities.



OTHER INSTITUTIONS

Joint Research Center for Human Retrovirus Infection (Kagoshima University Campus)

<https://ccvd.kufm.kagoshima-u.ac.jp/en/>

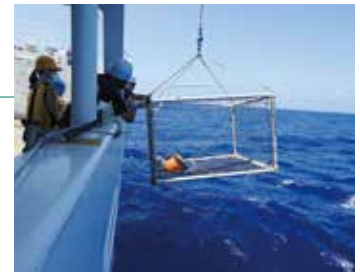
In April 2019, a new research center called the Joint Research Center for Human Retrovirus Infection was established. This was formed by reorganizing and merging Kumamoto University's AIDS Research Center and Kagoshima University's Center for Chronic Viral Diseases. Prior to this merger, for over 20 years, the Center for Chronic Viral Diseases has been conducting research mainly into Human T-cell Leukemia Virus Type 1 (HTLV-1), while the AIDS Research Center mainly into Human Immunodeficiency Virus Type 1 (HIV-1). Both HTLV-1 and HIV-1 are classified as human retroviruses. In addition to joint research on human retroviruses, the joint research center will also conduct research into the Hepatitis B Virus (HBV), which has not been classified as a retrovirus. These three viruses all carry the specific enzyme "reverse transcriptase" which is extremely difficult to eliminate from the body of infected patients. The center is aiming to develop novel treatments based on ideas that have not been examined before. The joint research center will be able to make efficient use of its resources and research personnel, and introduce specialized research equipment. Thus, this new model of the joint research center between different national universities will be able to conduct research not previously possible in the conventional joint research model.



Nansei-Toko Observatory for Earthquakes and Volcanoes

https://grad.eng.kagoshima-u.ac.jp/composition_e/nansei_e/

As a research unit within the Graduate School of Science and Engineering, Kagoshima University, the Nansei-Toko Observatory conducts research on, and monitors phenomena related to earthquakes and volcanic activities. Eleven seismic observation stations are operated in order to observe microearthquakes, and the seismic waveform data at these stations are also used for hypocenter determination at the Japan Meteorological Agency.



We investigate on slow earthquake activities in the northern part of Nansei islands under the 'Second Earthquake and Volcano Hazards Observation and Research Program' project sponsored by the Ministry of Education, Culture, Sports, Science and Technology. Through this research deformations of volcano edifices have been detected and reported by Global Navigation Satellite System (GNSS) and tilt change observations at Kirishima Volcanoes.

Research and Education Center on Judicial Policy

<https://lawcenter.ls.kagoshima-u.ac.jp/>

Research and Education Center on Judicial Policy was founded in 2016. The activity fields of it are wide range related to law and political science fields, and they are fulfilling and unique. We hold various legal information databases and provide them within the university. In addition, we have multiple remote conference systems and support activities conducted in collaboration with other organizations. Seminars for recurrent and career development to legal professionals are held. We also support to those who want to become legal professionals and provide information through interview instruction and explanatory sessions about law schools. The center has received high acclaim on providing local government regulation database on the web and legal counseling activities in regions where lack of legal support.



Kagoshima University North American Center

Kagoshima University's North American Center has its office in San Francisco, California. Originally started in 2004 as a silicon-valley office for promoting venture businesses through university-industry collaboration, it is now a center for research and education in US. Incorporated in the state of California, it plays a role as overseas office for Kagoshima University. The center engages in the following activities.

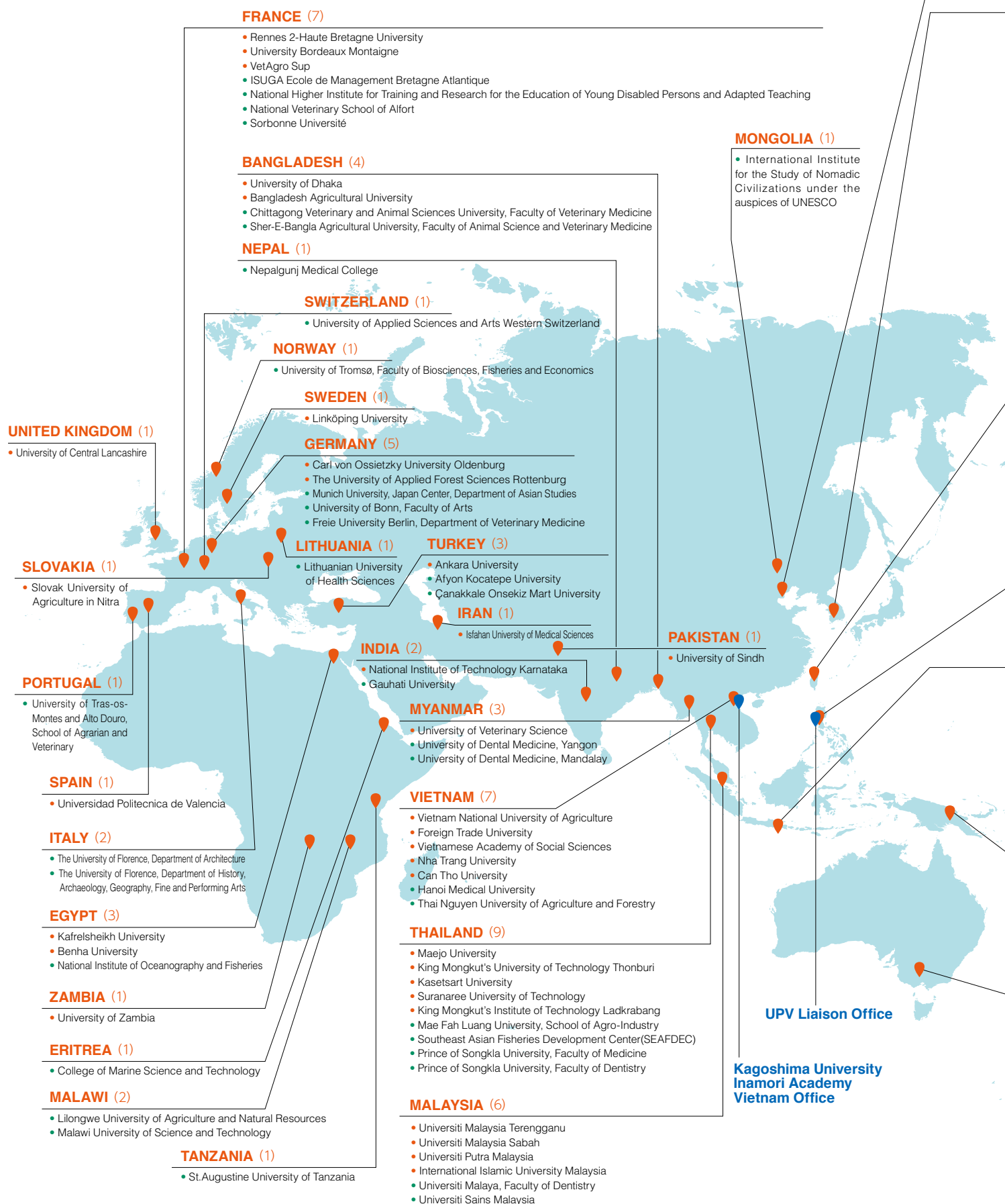
1. Student study tours and internship programs in US
2. Staff development programs in US
3. Participation in a Japanese Universities Network in Bay Area (JUNBA).



OVERSEAS PARTNER INSTITUTIONS / OVERSEAS OFFICES

Academic Exchange Agreements with 167 Institutions in 40 Countries and Regions and 3 Overseas Offices

Kagoshima University has partnered with a number of overseas institutions in order to advance education, research, and student exchange. It also has three overseas offices in USA, Philippines, and Vietnam which promote academic exchange between these countries and Kagoshima University.



• University Level

• Faculty Level

KOREA (16)

- Pukyong National University
- Chonbuk National University
- Kunsan National University
- Jeju National University
- Gangnung-Wonju National University
- Kangwon National University
- Kongju National University
- Mokpo National University
- Sangmyung University
- Chungbuk National University
- Hankuk University of Foreign Studies
- Chung-Ang University, Red Cross College of Nursing
- Korea Institute of Ocean Science & Technology
- Chung-Ang University Hospital
- Kyung Hee University, School of Dentistry
- Jeju Research Institute, Center for Jeju Studies

TAIWAN (14)

- Tamkang University
- National Kaohsiung University of Science and Technology
- National Chung Hsing University
- National University of Kaohsiung
- National Cheng Kung University
- National Taiwan Ocean University
- National Chi Nan University, College of Humanities
- National Taipei University of Education
- Taipei Municipal Dazhi Junior High School
- Kaohsiung Medical University, College of Dental Medicine
- National Yang-Ming University, School of Dentistry
- Chinese Culture University, College of Agriculture
- National Chiayi University, College of Life Sciences
- National Taiwan University College of Science

PHILIPPINES (4)

- University of the Philippines
- Polytechnic University of the Philippines
- University of San Carlos, College of Arts and Sciences
- Cavite State University, College of Veterinary Medicine and Biomedical Sciences

INDONESIA (12)

- Andalas University
- University of Indonesia
- Bogor Agricultural University
- Diponegoro University
- Institut Teknologi Bandung
- Sam Ratulangi University
- Pattimura University
- Sriwijaya University
- Universitas Airlangga
- Hasanuddin University, Faculty of Marine Science and Fisheries
- University of Jember, Faculty of Medicine
- Universitas Brawijaya, Faculty of Dentistry

FIJI (1)

- University of South Pacific

PAPUA NEW GUINEA (1)

- The University of Papua New Guinea

AUSTRALIA (4)

- The University of New England
- University of Technology Sydney
- Central Queensland University
- Flinders University

CHINA (29)

- Xiangtan University
- Yunnan Agricultural University
- Hunan Agricultural University
- Central South University
- China Medical University
- Nanjing University of Technology
- Northeast Normal University
- Renmin University of China
- Northeastern University
- Chongqing University
- Shandong Normal University
- Shanghai Ocean University
- Capital University of Economics and Business
- East China University of Political Science and Law
- Dalian Maritime University
- Sichuan University Jinjiang collage
- Shanxi Normal University
- Inner Mongolia University, School of Ethnology and sociology
- Inner Mongolia Normal University, School of Foreign Language Education
- Dalian Ocean University
- Zhejiang Ocean University
- Ministry of Natural Resources, Second Institute of Oceanography
- Shanghai Maritime University, Foreign Language College
- Huazhong Agricultural University
- Huazhong Agricultural University, College of Fisheries
- Xuzhou Medical University
- Yangtze University, School of Foreign Studies
- Hainan University, College of Foreign Languages
- The University of Hong Kong, Faculty of Dentistry

CANADA (1)

- The University of British Columbia, Faculty of Dentistry

UNITED STATES OF AMERICA (11)

- University of Georgia
- University of Miami
- University of Guam
- University of West Georgia
- San Jose State University
- North Dakota State University
- University of Hawai'i at Mānoa
- University of Wisconsin La Crosse
- Florida Agricultural and Mechanical University
- The Energy Institute of the City University of New York
- Berea College

Kagoshima University North American Center

MEXICO (2)

- Autonomous University of Nuevo Leon
- University of Monterrey

COLOMBIA (1)

- Universidad del Magdalena

BRAZIL (3)

- Federal University of São Carlos
- University of Amazonas Foundation
- Universidade Federal Rural da Amazonia, College of Fisheries

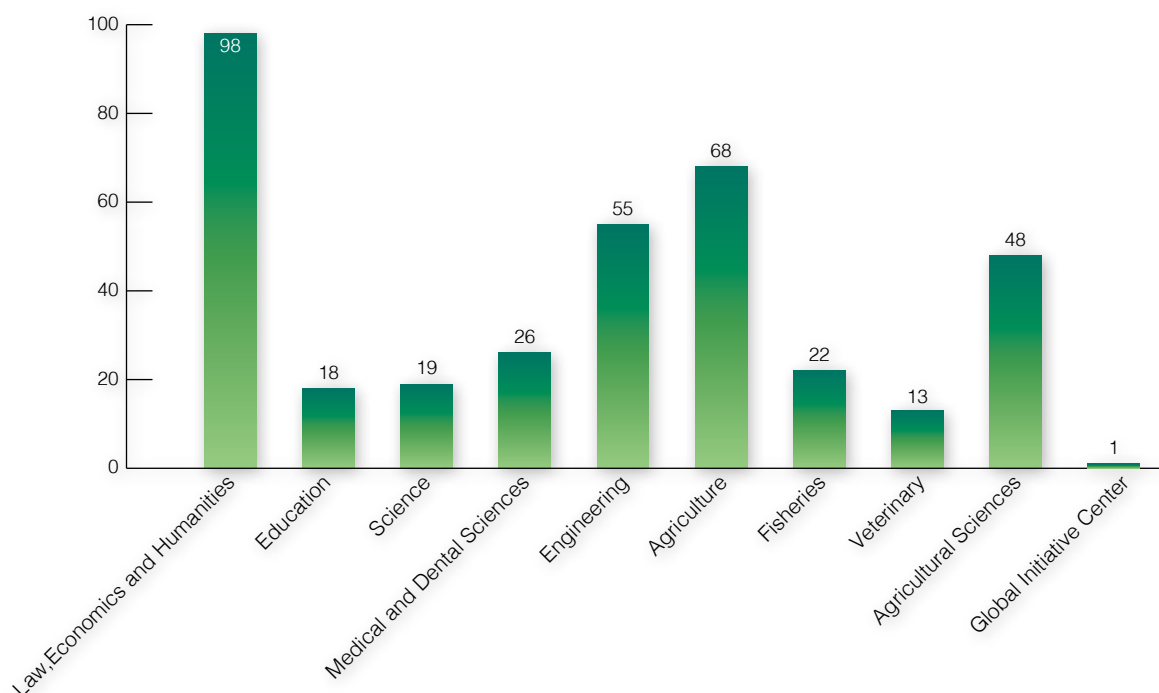
OTHER PARTNERSHIP

Memorandum of Understanding for Establishment of Postgraduate (Master) Program on Tropical Fisheries with International Linkage

- Sam Ratulangi University, Faculty of Fisheries and Marine Science
- University of Philippines Visayas, College of Fisheries and Ocean Sciences
- Kasetsart University, Faculty of Fisheries
- Universiti Malaysia Terengganu, School of Fisheries and Aquaculture Sciences
- Nha Trang University, Faculty of Graduate Studies
- Bogor Agricultural University, Faculty of Fisheries and Marine Sciences
- National Chiayi University

NUMBER OF INTERNATIONAL STUDENTS

According to Field of Study



According to Nationality

Asia	China	159	Korea	52	Vietnam	29	Indonesia	13	Bangladesh	19
	Taiwan	4	Malaysia	12	Sri Lanka	6	Nepal	2	Thailand	5
	Myanmar	4	Pakistan	3	India	1	Philippines	6	Cambodia	4

Middle East	Turkey	5
-------------	--------	---

Africa	Tanzania	3	Benin	1	Sierra Leone	2	Uganda	1		
	Kenya	1	Egypt	1	Ethiopia	1	South Soudan	1	Somalia	1

Oceania	Solomon Islands	2	Fiji	2	Australia	3
---------	-----------------	---	------	---	-----------	---

Americas	United States of America	2	Brazil	3	Peru	2	Saint Lucia	1
----------	--------------------------	---	--------	---	------	---	-------------	---

Europe	France	7	Spain	1	Germany	5	Norway	3
--------	--------	---	-------	---	---------	---	--------	---



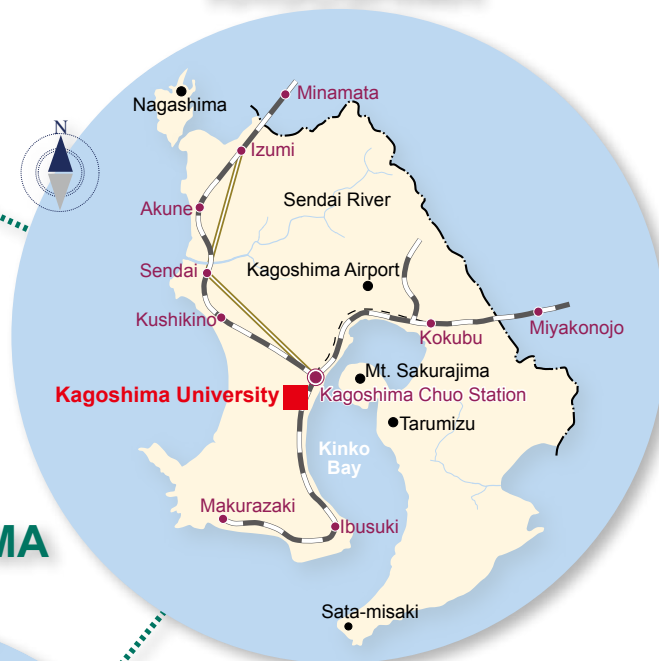
CAMPUS GUIDE

The campuses of Kagoshima University are located in Kagoshima City, which has a population of more than half a million and is the most populous urban area in the southernmost part of Japan.

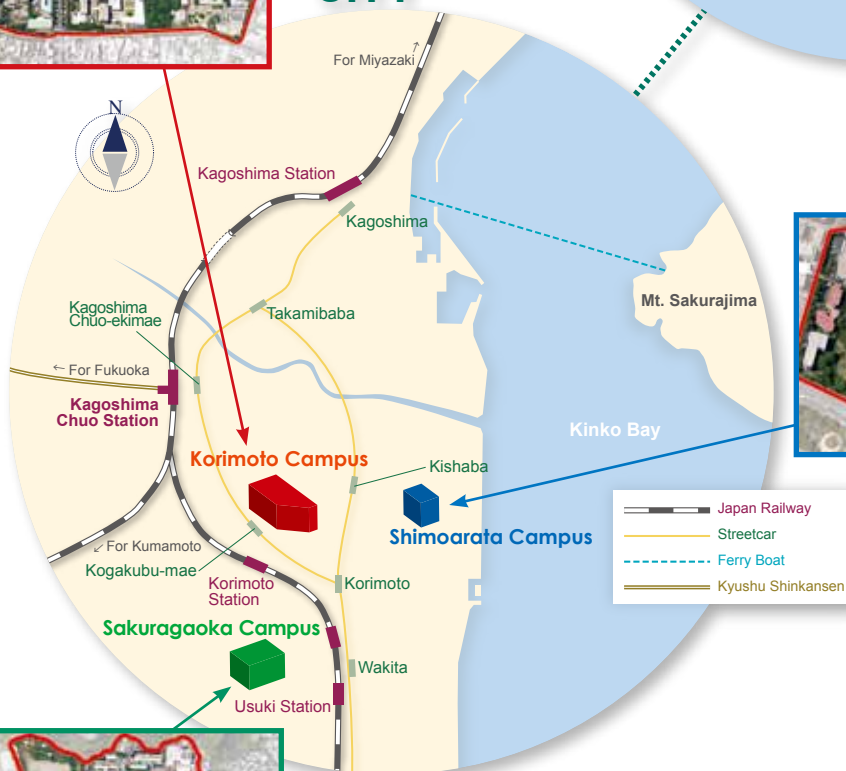
JAPAN



KAGOSHIMA



KAGOSHIMA CITY



University Emblem



The university emblem was established to commemorate the 50th anniversary of the founding of the university. The emblem is designed so that the first letter *K* of KAGOSHIMA is made to look like a phoenix about to take flight. It is a symbol of our graduating students leaving the campus of Kagoshima University, with its rich history and tradition, and soaring high above onto the world stage.